

EIF4E2 Rabbit pAb

Catalog No.: A4305 **2 Publications**

Basic Information

Observed MW

27kDa/28kDa

Calculated MW

28kDa

Category

Primary antibody

Applications

WB, IHC-P, IF/ICC, ELISA

Cross-Reactivity

Human, Mouse, Rat

Background

Enables ubiquitin protein ligase binding activity. Involved in positive regulation of miRNA mediated inhibition of translation. Acts upstream of or within negative regulation of translation. Located in P-body. Part of mRNA cap binding activity complex.

Recommended Dilutions

WB 1:500 - 1:5000

IHC-P 1:50 - 1:200

IF/ICC 1:50 - 1:200

ELISA Recommended starting concentration is 1 µg/mL. Please optimize the concentration based on your specific assay requirements.

Immunogen Information

Gene ID

9470

Swiss Prot

O60573

Immunogen

Recombinant protein (or fragment). This information is considered to be commercially sensitive.

Synonyms

4EHP; IF4e; 4E-LP; h4EHP; EIF4EL3; EIF4E2

Contact

☎ | 400-999-6126

✉ | cn.market@abclonal.com.cn

🌐 | www.abclonal.com.cn

Product Information

Source

Rabbit

Isotype

IgG

Purification

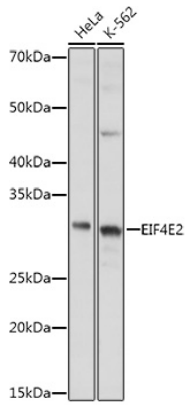
Affinity purification

Storage

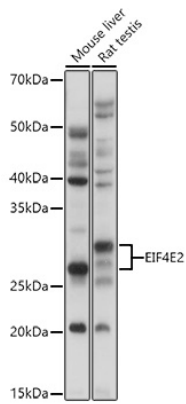
Store at -20°C. Avoid freeze / thaw cycles.

Buffer: PBS, pH 7.3, containing 50% glycerol. Preserved with Proclin300 or sodium azide. May contain 0.05% BSA as specified on the Certificate of Analysis.

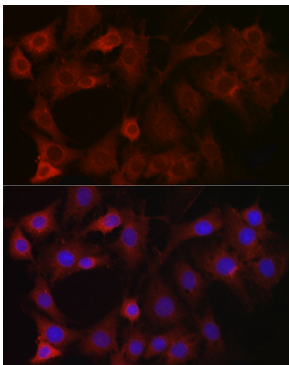
Validation Data



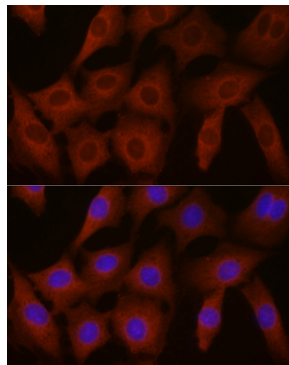
Western blot analysis of various lysates using EIF4E2 Rabbit pAb (A4305) at 1:1000 dilution. Secondary antibody: HRP-conjugated Goat anti-Rabbit IgG (H+L) (AS014) at 1:10000 dilution. Lysates/proteins: 25µg per lane. Blocking buffer: 3% nonfat dry milk in TBST. Detection: ECL Basic Kit (RM00020). Exposure time: 2s.



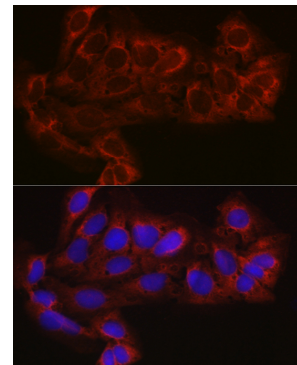
Western blot analysis of various lysates using EIF4E2 Rabbit pAb (A4305) at 1:1000 dilution. Secondary antibody: HRP-conjugated Goat anti-Rabbit IgG (H+L) (AS014) at 1:10000 dilution. Lysates/proteins: 25µg per lane. Blocking buffer: 3% nonfat dry milk in TBST. Detection: ECL Basic Kit (RM00020). Exposure time: 5s.



Immunofluorescence analysis of C6 cells using EIF4E2 Rabbit pAb (A4305) at dilution of 1:100 (40x lens). Secondary antibody: Cy3-conjugated Goat anti-Rabbit IgG (H+L) (AS007) at 1:500 dilution. Blue: DAPI for nuclear staining.



Immunofluorescence analysis of NIH-3T3 cells using EIF4E2 Rabbit pAb (A4305) at dilution of 1:100 (40x lens). Secondary antibody: Cy3-conjugated Goat anti-Rabbit IgG (H+L) (AS007) at 1:500 dilution. Blue: DAPI for nuclear staining.



Immunofluorescence analysis of U-2 OS cells using EIF4E2 Rabbit pAb (A4305) at dilution of 1:100 (40x lens). Secondary antibody: Cy3-conjugated Goat anti-Rabbit IgG (H+L) (AS007) at 1:500 dilution. Blue: DAPI for nuclear staining.