

Epac1/RAPGEF3 Rabbit mAb

Catalog No.: A4149 **Recombinant**

Basic Information

Observed MW

100kDa

Calculated MW

104kDa

Category

Primary antibody

Applications

WB, IHC-P, ELISA

Cross-Reactivity

Human, Mouse, Rat

CloneNo number

ARC0908

Background

Enables guanyl-nucleotide exchange factor activity and protein domain specific binding activity. Involved in several processes, including positive regulation of protein modification process

Recommended Dilutions

WB 1:1000 - 1:2000

IHC-P 1:100 - 1:400

ELISA Recommended starting concentration is 1 µg/mL. Please optimize the concentration based on your specific assay requirements

Immunogen Information

Gene ID

10411

Swiss Prot

O95398

Immunogen

Synthetic peptide. This information is considered to be commercially sensitive.

Synonyms

EPAC; Epac1/RAPGEF3

Contact

 | 400-999-6126

 | cn.market@abclonal.com.cn

 | www.abclonal.com.cn

Product Information

Source

Rabbit

Isotype

IgG

Purification

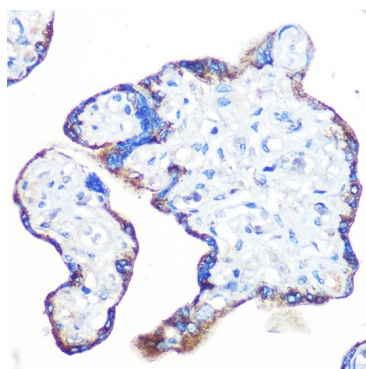
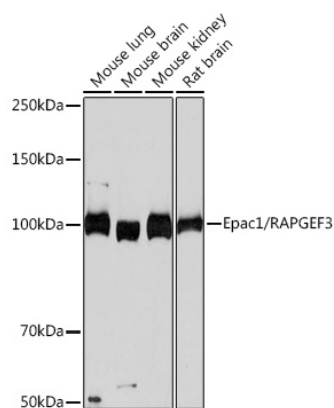
Affinity purification

Storage

Store at -20°C. Avoid freeze / thaw cycles.

Buffer: PBS with 0.02% sodium azide, 0.05% BSA, 50% glycerol, pH7.3.

Validation Data



Immunohistochemistry analysis of paraffin-embedded Human placenta using Epac1/RAPGEF3 Rabbit mAb (A4149) at dilution of 1:100 (40x lens). Microwave antigen retrieval performed with 0.01M PBS Buffer (pH 7.2) prior to IHC staining.