

# GLUT3/SLC2A3 Rabbit mAb

Catalog No.: A4137 **Recombinant** **2 Publications**

## Basic Information

### Observed MW

48-60kDa

### Calculated MW

54kDa

### Category

Primary antibody

### Applications

WB, IP, ELISA

### Cross-Reactivity

Human, Mouse, Rat

### CloneNo number

ARC0917

## Background

Enables dehydroascorbic acid transmembrane transporter activity; glucose binding activity; and glucose transmembrane transporter activity. Involved in glucose import across plasma membrane and transport across blood-brain barrier. Is integral component of plasma membrane. Biomarker of Alzheimer's disease; acanthosis nigricans; diabetes mellitus; and type 2 diabetes mellitus.

## Recommended Dilutions

**WB** 1:1000 - 1:4000

**IP** 0.5µg-4µg antibody for  
400µg-600µg extracts of  
whole cells

**ELISA** Recommended starting  
concentration is 1 µg/mL.  
Please optimize the  
concentration based on  
your specific assay  
requirements.

## Immunogen Information

### Gene ID

6515

### Swiss Prot

P11169

### Immunogen

Synthetic peptide. This information is considered to be commercially sensitive.

### Synonyms

GLUT3; GLUT3/SLC2A3

## Contact

☎ | 400-999-6126

✉ | [cn.market@abclonal.com.cn](mailto:cn.market@abclonal.com.cn)

🌐 | [www.abclonal.com.cn](http://www.abclonal.com.cn)

## Product Information

### Source

Rabbit

### Isotype

IgG

### Purification

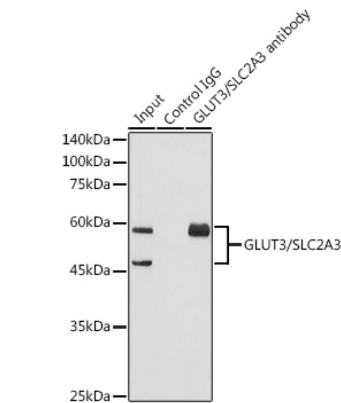
Affinity purification

### Storage

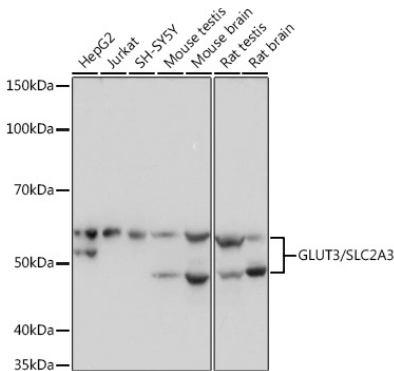
Store at -20°C. Avoid freeze / thaw cycles.

Buffer: PBS containing 50% glycerol and 0.05% BSA, preserved with proclin300 or sodium azide (as specified on the Certificate of Analysis), pH 7.3.

Validation Data



Immunoprecipitation analysis of 600 µg extracts of Mouse brain using 3 µg GLUT3/SLC2A3 antibody (A4137). Western blot was performed from the immunoprecipitate using GLUT3/SLC2A3 antibody (A4137) at a dilution of 1:1000.



Western blot analysis of various lysates using GLUT3/SLC2A3 Rabbit mAb (A4137) at 1:1000 dilution. Secondary antibody: HRP-conjugated Goat anti-Rabbit IgG (H+L) (AS014) at 1:10000 dilution. Lysates/proteins: 25µg per lane. Blocking buffer: 3% nonfat dry milk in TBST. Detection: ECL Basic Kit (RM00020). Exposure time: 1s.