

# SRP54 Rabbit pAb

Catalog No.: A4126

1 Publications

## Basic Information

### Observed MW

56kDa

### Calculated MW

56kDa

### Category

Primary antibody

### Applications

WB, ELISA

### Cross-Reactivity

Human, Mouse

## Background

Enables several functions, including 7S RNA binding activity; endoplasmic reticulum signal peptide binding activity; and guanyl ribonucleotide binding activity. Contributes to GTPase activity. Involved in granulocyte differentiation and protein targeting to ER. Located in cytosol and nucleus. Part of signal recognition particle, endoplasmic reticulum targeting. Implicated in severe congenital neutropenia 8.

## Recommended Dilutions

**WB** 1:200 - 1:2000

**ELISA** Recommended starting concentration is 1 µg/mL. Please optimize the concentration based on your specific assay requirements.

## Immunogen Information

### Gene ID

6729

### Swiss Prot

P61011

### Immunogen

Recombinant protein (or fragment). This information is considered to be commercially sensitive.

### Synonyms

SCN8; SRP54

## Contact

☎ | 400-999-6126

✉ | [cn.market@abclonal.com.cn](mailto:cn.market@abclonal.com.cn)

🌐 | [www.abclonal.com.cn](http://www.abclonal.com.cn)

## Product Information

### Source

Rabbit

### Isotype

IgG

### Purification

Affinity purification

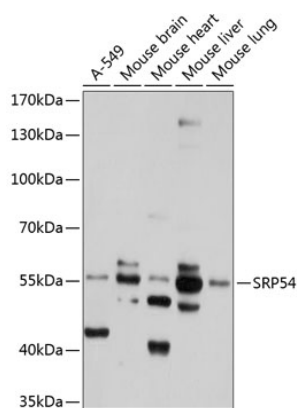
### Storage

Store at -20°C. Avoid freeze / thaw cycles.

Buffer: PBS with 0.02% sodium azide, 50% glycerol, pH 7.3.

## Validation Data

---



Western blot analysis of various lysates using SRP54 Rabbit pAb (A4126) at 1:1000 dilution.  
Secondary antibody: HRP-conjugated Goat anti-Rabbit IgG (H+L) (AS014) at 1:10000 dilution.  
Lysates/proteins: 25µg per lane.  
Blocking buffer: 3% nonfat dry milk in TBST.  
Detection: ECL Basic Kit (RM00020).  
Exposure time: 10s.