

SMMHC/MYH11 Rabbit mAb

Catalog No.: A4064 **Recombinant** **8 Publications**

Basic Information

Observed MW

227 kDa

Calculated MW

227kDa

Category

Primary antibody

Applications

WB,IF-F,IF-P,IHC-P,ELISA

Cross-Reactivity

Human, Mouse, Rat

CloneNo number

ARC51911

Background

The protein encoded by this gene is a smooth muscle myosin belonging to the myosin heavy chain family. The gene product is a subunit of a hexameric protein that consists of two heavy chain subunits and two pairs of non-identical light chain subunits. It functions as a major contractile protein, converting chemical energy into mechanical energy through the hydrolysis of ATP. A chromosomal rearrangement involving this gene is associated with acute myeloid leukemia of the M4Eo subtype. Mutations in this gene are associated with visceral myopathy, megacystis-microcolon-intestinal hypoperistalsis syndrome 2, and familial thoracic aortic aneurysm 4.

Recommended Dilutions

WB 1:1000 - 1:5000

IF-F 1:200 - 1:600

IF-P 1:400 - 1:1600

IHC-P 1:500 - 1:5000

ELISA Recommended starting concentration is 1 µg/mL. Please optimize the concentration based on your specific assay requirements.

Immunogen Information

Gene ID

4629

Swiss Prot

P35749

Immunogen

Recombinant protein (or fragment). This information is considered to be commercially sensitive.

Synonyms

AAT4; FAA4; SMHC; SMMHC; VSCM2; SMMS-1; SMMHC/MYH11

Contact

 | 400-999-6126

 | cn.market@abclonal.com.cn

 | www.abclonal.com.cn

Product Information

Source

Rabbit

Isotype

IgG

Purification

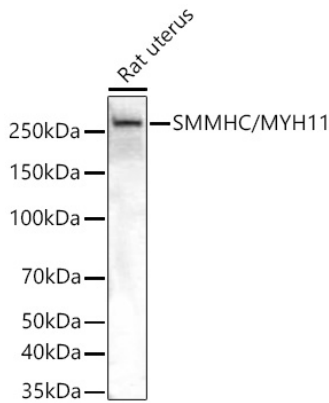
Affinity purification

Storage

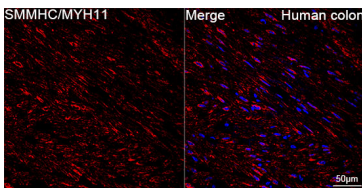
Store at -20°C. Avoid freeze / thaw cycles.

Buffer: PBS containing 50% glycerol and 0.05% BSA, preserved with proclin300 or sodium azide (as specified on the Certificate of Analysis), pH 7.3.

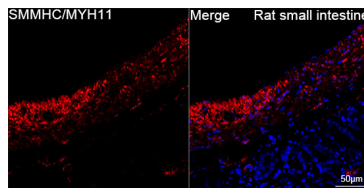
Validation Data



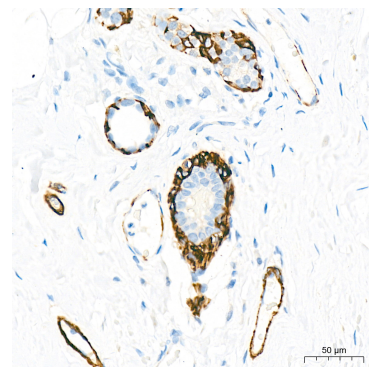
Western blot analysis of lysates from Rat uterus using SMMHC/MYH11 Rabbit mAb (A4064) at 1:1000 dilution incubated at room temperature for 1.5 hours.
 Secondary antibody: HRP-conjugated Goat anti-Rabbit IgG (H+L) (AS014) at 1:10000 dilution.
 Lysates/proteins: 25 µg per lane.
 Blocking buffer: 3% nonfat dry milk in TBST.
 Detection: ECL Basic Kit (RM00020).
 Exposure time: 1 s.



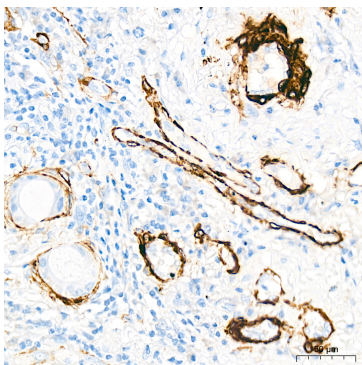
Confocal imaging of paraffin-embedded Human colon using SMMHC/MYH11 Rabbit mAb (A4064, dilution 1:800) followed by a further incubation with Cy3 Goat Anti-Rabbit IgG (H+L) (AS007, dilution 1:500) (Red). DAPI was used for nuclear staining (Blue). Objective: 40x. Perform high pressure antigen retrieval with 0.01 M citRate buffer (pH 6.0) prior to IF staining.



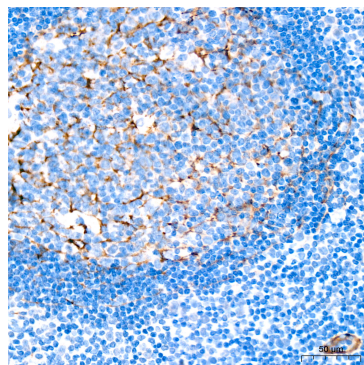
Confocal imaging of paraffin-embedded Rat small intestine using SMMHC/MYH11 Rabbit mAb (A4064, dilution 1:800) followed by a further incubation with Cy3 Goat Anti-Rabbit IgG (H+L) (AS007, dilution 1:500) (Red). DAPI was used for nuclear staining (Blue). Objective: 40x. Perform high pressure antigen retrieval with 0.01 M citRate buffer (pH 6.0) prior to IF staining.



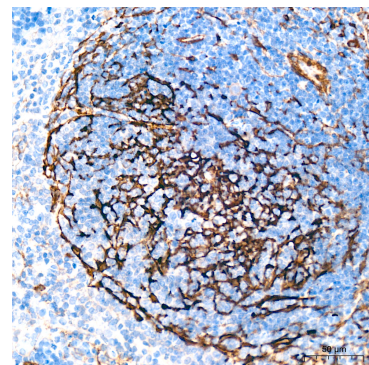
Immunohistochemistry analysis of paraffin-embedded Human breast tissue using SMMHC/MYH11 Rabbit mAb (A4064) at a dilution of 1:1000 (40x lens). High pressure antigen retrieval performed with 0.01M Citrate Buffer (pH 6.0) prior to IHC staining.



Immunohistochemistry analysis of paraffin-embedded Human lung tissue using SMMHC/MYH11 Rabbit mAb (A4064) at a dilution of 1:1000 (40x lens). High pressure antigen retrieval performed with 0.01M Citrate Buffer (pH 6.0) prior to IHC staining.

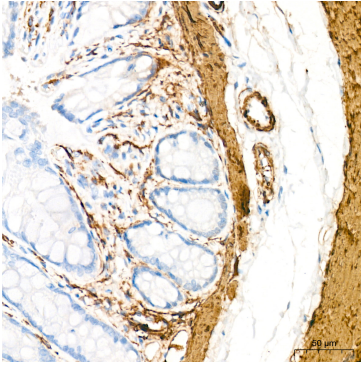


Immunohistochemistry analysis of paraffin-embedded Human tonsil tissue using SMMHC/MYH11 Rabbit mAb (A4064) at a dilution of 1:1000 (40x lens). High pressure antigen retrieval performed with 0.01M Citrate Buffer (pH 6.0) prior to IHC staining.

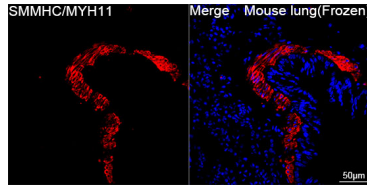


Immunohistochemistry analysis of paraffin-embedded Mouse spleen tissue using SMMHC/MYH11 Rabbit mAb (A4064) at a dilution of 1:1000 (40x lens). High pressure antigen retrieval performed with 0.01M Citrate Buffer (pH 6.0) prior to IHC staining.

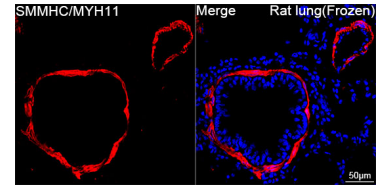
Validation Data



Immunohistochemistry analysis of paraffin-embedded Rat colon tissue using SMMHC/MYH11 Rabbit mAb (A4064) at a dilution of 1:1000 (40x lens). High pressure antigen retrieval performed with 0.01M Citrate Buffer (pH 6.0) prior to IHC staining.



Confocal imaging of frozen sections of Mouse lung tissue using SMMHC/MYH11 Rabbit mAb (A4064, dilution 1:200) followed by a further incubation with Cy3-conjugated Goat anti-Rabbit IgG (H+L) (AS007, dilution 1:500) (Red). DAPI was used for nuclear staining (Blue). Microwave antigen retrieval performed with 0.01M Citrate Buffer (pH 6.0) prior to IF staining. Objective: 40x.



Confocal imaging of frozen sections of Rat lung tissue using SMMHC/MYH11 Rabbit mAb (A4064, dilution 1:200) followed by a further incubation with Cy3-conjugated Goat anti-Rabbit IgG (H+L) (AS007, dilution 1:500) (Red). DAPI was used for nuclear staining (Blue). Microwave antigen retrieval performed with 0.01M Citrate Buffer (pH 6.0) prior to IF staining. Objective: 40x.