

# NDUFB10 Rabbit pAb

Catalog No.: A3982 **2 Publications**

## Basic Information

### Observed MW

21kDa

### Calculated MW

21kDa

### Category

Primary antibody

### Applications

WB,IP,ELISA

### Cross-Reactivity

Human, Mouse, Rat

## Background

Involved in mitochondrial respiratory chain complex I assembly. Located in mitochondrial inner membrane. Part of mitochondrial respiratory chain complex I. Implicated in nuclear type mitochondrial complex I deficiency 35.

## Recommended Dilutions

**WB** 1:500 - 1:2000

**IP** 0.5µg-4µg antibody for  
200µg-400µg extracts of  
whole cells

**ELISA** Recommended starting  
concentration is 1 µg/mL.  
Please optimize the  
concentration based on  
your specific assay  
requirements.

## Immunogen Information

### Gene ID

4716

### Swiss Prot

O96000

### Immunogen

Recombinant protein (or fragment). This information is considered to be commercially sensitive.

### Synonyms

PDSW; MC1DN35; NDUFB10

## Contact

☎ | 400-999-6126

✉ | [cn.market@abclonal.com.cn](mailto:cn.market@abclonal.com.cn)

🌐 | [www.abclonal.com.cn](http://www.abclonal.com.cn)

## Product Information

### Source

Rabbit

### Isotype

IgG

### Purification

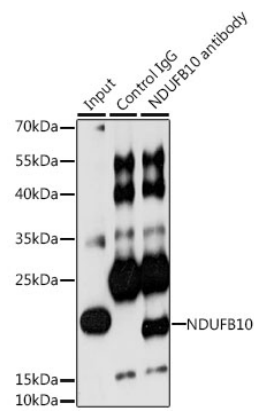
Affinity purification

### Storage

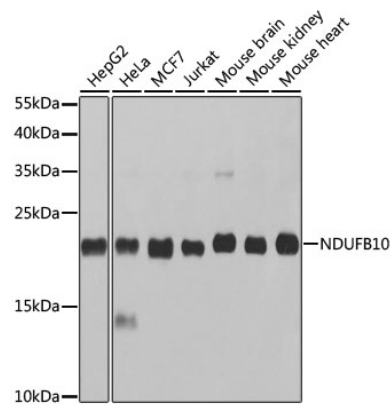
Store at -20°C. Avoid freeze / thaw cycles.

Buffer: PBS containing 50% glycerol, preserved with proclin300 or sodium azide (as specified on the Certificate of Analysis), pH 7.3.

# Validation Data



Immunoprecipitation analysis of 200 µg extracts of HeLa cells, using 3 µg NDUFB10 antibody (A3982). Western blot was performed from the immunoprecipitate using NDUFB10 antibody (A3982) at a dilution of 1:1000.



Western blot analysis of various lysates using NDUFB10 Rabbit pAb (A3982) at 1:1000 dilution. Secondary antibody: HRP-conjugated Goat anti-Rabbit IgG (H+L) (AS014) at 1:10000 dilution. Lysates/proteins: 25µg per lane. Blocking buffer: 3% nonfat dry milk in TBST. Detection: ECL Basic Kit (RM00020). Exposure time: 10s.