

FMO2 Rabbit pAb

Catalog No.: A3864

Basic Information

Observed MW

70kDa

Calculated MW

61kDa

Category

Primary antibody

Applications

WB, ELISA

Cross-Reactivity

Human

Background

This gene encodes a flavin-containing monooxygenase family member. It is an NADPH-dependent enzyme that catalyzes the N-oxidation of some primary alkylamines through an N-hydroxylamine intermediate. However, some human populations contain an allele (FMO2*2A) with a premature stop codon, resulting in a protein that is C-terminally-truncated, has no catalytic activity, and is likely degraded rapidly. This gene is found in a cluster with other related family members on chromosome 1. Alternative splicing results in multiple transcript variants.

Recommended Dilutions

WB 1:200 - 1:2000

ELISA Recommended starting concentration is 1 µg/mL. Please optimize the concentration based on your specific assay requirements.

Immunogen Information

Gene ID

2327

Swiss Prot

Q99518

Immunogen

Recombinant protein (or fragment). This information is considered to be commercially sensitive.

Synonyms

FMO1B1; FMO2

Contact

☎ | 400-999-6126

✉ | cn.market@abclonal.com.cn

🌐 | www.abclonal.com.cn

Product Information

Source

Rabbit

Isotype

IgG

Purification

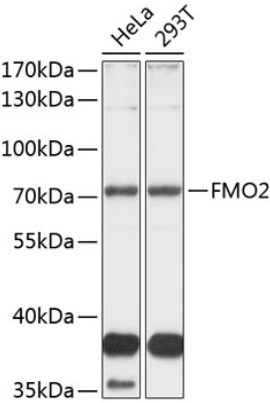
Affinity purification

Storage

Store at -20°C. Avoid freeze / thaw cycles.

Buffer: PBS with 0.02% sodium azide, 50% glycerol, pH7.3.

Validation Data



Western blot analysis of various lysates using FMO2 Rabbit pAb (A3864) at 1:1000 dilution.
Secondary antibody: HRP-conjugated Goat anti-Rabbit IgG (H+L) (AS014) at 1:10000 dilution.
Lysates/proteins: 25µg per lane.
Blocking buffer: 3% nonfat dry milk in TBST.
Detection: ECL Basic Kit (RM00020).
Exposure time: 30s.