

# MYLK Rabbit mAb

Catalog No.: A3835

Recombinant

4 Publications

## Basic Information

**Observed MW**

130kDa/140kDa

**Calculated MW**

211kDa

**Category**

Primary antibody

**Applications**

WB, ELISA

**Cross-Reactivity**

Human

**CloneNo number**

ARC0842

## Background

This gene, a muscle member of the immunoglobulin gene superfamily, encodes myosin light chain kinase which is a calcium/calmodulin dependent enzyme. This kinase phosphorylates myosin regulatory light chains to facilitate myosin interaction with actin filaments to produce contractile activity. This gene encodes both smooth muscle and nonmuscle isoforms. In addition, using a separate promoter in an intron in the 3' region, it encodes telokin, a small protein identical in sequence to the C-terminus of myosin light chain kinase, that is independently expressed in smooth muscle and functions to stabilize unphosphorylated myosin filaments. A pseudogene is located on the p arm of chromosome 3. Four transcript variants that produce four isoforms of the calcium/calmodulin dependent enzyme have been identified as well as two transcripts that produce two isoforms of telokin. Additional variants have been identified but lack full length transcripts.

## Recommended Dilutions

**WB** 1:1000 - 1:2000

**ELISA** Recommended starting concentration is 1 µg/mL. Please optimize the concentration based on your specific assay requirements.

## Immunogen Information

**Gene ID**

4638

**Swiss Prot**

Q15746

**Immunogen**

Synthetic peptide. This information is considered to be commercially sensitive.

**Synonyms**

KRP; AAT7; MLCK; MLCK1; MMIHS; MYLK1; MMIHS1; MYLK-L; smMLCK; MLCK108; MLCK210; MSTP083; MYLK

## Contact

 | 400-999-6126 | [cn.market@abclonal.com.cn](mailto:cn.market@abclonal.com.cn) | [www.abclonal.com.cn](http://www.abclonal.com.cn)

## Product Information

**Source**

Rabbit

**Isotype**

IgG

**Purification**

Affinity purification

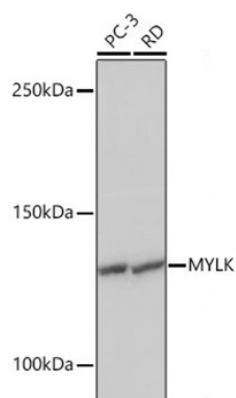
**Storage**

Store at -20°C. Avoid freeze / thaw cycles.

Buffer: PBS with 0.02% sodium azide, 0.05% BSA, 50% glycerol, pH7.3.

## Validation Data

---



Western blot analysis of various lysates using MYLK Rabbit mAb (A3835) at 1:1000 dilution.  
Secondary antibody: HRP-conjugated Goat anti-Rabbit IgG (H+L) (AS014) at 1:10000 dilution.  
Lysates/proteins: 25µg per lane.  
Blocking buffer: 3% nonfat dry milk in TBST.  
Detection: ECL Basic Kit (RM00020).  
Exposure time: 1s.