

NUDEL/NDEL1 Rabbit mAb

Catalog No.: A3799 **Recombinant**

Basic Information

Observed MW

40kDa

Calculated MW

38kDa

Category

Primary antibody

Applications

WB, ELISA

Cross-Reactivity

Human, Mouse, Rat

CloneNo number

ARC0835

Background

Enables identical protein binding activity. Involved in chromosome segregation; positive regulation of GTPase activity; and regulation of intracellular protein transport. Located in kinetochore. Biomarker of schizophrenia.

Recommended Dilutions

WB 1:500 - 1:2000

ELISA Recommended starting concentration is 1 µg/mL. Please optimize the concentration based on your specific assay requirements.

Immunogen Information

Gene ID

81565

Swiss Prot

Q9GZM8

Immunogen

Synthetic peptide. This information is considered to be commercially sensitive.

Synonyms

EOPA; NDE2; NUDEL; MITAP1; NDE1L1; NUDEL/NDEL1

Contact

☎ | 400-999-6126

✉ | cn.market@abclonal.com.cn

🌐 | www.abclonal.com.cn

Product Information

Source

Rabbit

Isotype

IgG

Purification

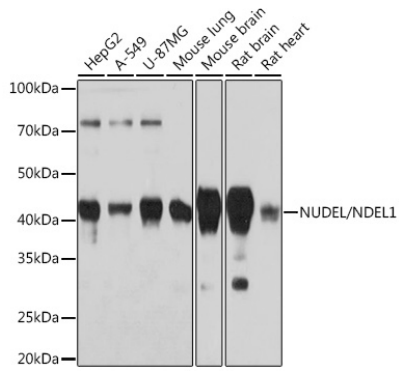
Affinity purification

Storage

Store at -20°C. Avoid freeze / thaw cycles.

Buffer: PBS containing 50% glycerol and 0.05% BSA, preserved with proclin300 or sodium azide (as specified on the Certificate of Analysis), pH 7.3.

Validation Data



Western blot analysis of various lysates using NUDEL/NDEL1 Rabbit mAb (A3799) at 1:1000 dilution.
Secondary antibody: HRP-conjugated Goat anti-Rabbit IgG (H+L) (AS014) at 1:10000 dilution.
Lysates/proteins: 25µg per lane.
Blocking buffer: 3% nonfat dry milk in TBST.
Detection: ECL Basic Kit (RM00020).
Exposure time: 3min.