

ATG16L1 Rabbit mAb

Catalog No.: A3637

Recombinant

1 Publications

Basic Information

Observed MW

68kDa/72kDa

Calculated MW

68kDa

Category

Primary antibody

Applications

ELISA, WB

Cross-Reactivity

Human, Mouse

CloneNo number

ARC0812

Background

The protein encoded by this gene is part of a large protein complex that is necessary for autophagy, the major process by which intracellular components are targeted to lysosomes for degradation. Defects in this gene are a cause of susceptibility to inflammatory bowel disease type 10 (IBD10). Several transcript variants encoding different isoforms have been found for this gene.

Recommended Dilutions

WB 1:500 - 1:2000

Immunogen Information

Gene ID

55054

Swiss Prot

Q676U5

Immunogen

Recombinant fusion protein containing a sequence corresponding to amino acids 6-105 of human ATG16L1 (Q676U5).

Synonyms

IBD10; WDR30; APG16L; ATG16A; ATG16L; ATG16L1

Contact

☎ | 400-999-6126

✉ | cn.market@abclonal.com.cn

🌐 | www.abclonal.com.cn

Product Information

Source

Rabbit

Isotype

IgG

Purification

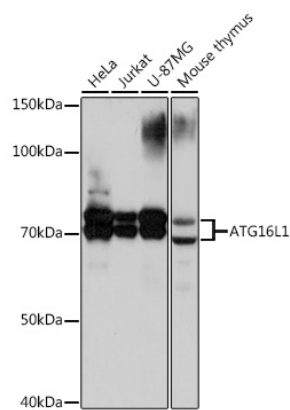
Affinity purification

Storage

Store at -20°C. Avoid freeze / thaw cycles.

Buffer: PBS with 0.02% sodium azide, 0.05% BSA, 50% glycerol, pH7.3.

Validation Data



Western blot analysis of extracts of various cell lines, using ATG16L1 Rabbit mAb (A3637) at 1:1000 dilution.
Secondary antibody: HRP Goat Anti-Rabbit IgG (H+L) (AS014) at 1:10000 dilution.
Lysates/proteins: 25µg per lane.
Blocking buffer: 3% nonfat dry milk in TBST.
Detection: ECL Basic Kit (RM00020).
Exposure time: 30s.