

# Dynein intermediate chain 1 Rabbit mAb

Catalog No.: A3624 **Recombinant**

## Basic Information

**Observed MW**

79kDa

**Calculated MW**

79kDa

**Category**

Primary antibody

**Applications**

WB, ELISA

**Cross-Reactivity**

Mouse, Rat

**CloneNo number**

ARC2061

## Background

This gene encodes a member of the dynein intermediate chain family. The encoded protein is part of the dynein complex in respiratory cilia. The inner- and outer-arm dyneins, which bridge between the doublet microtubules in axonemes, are the force-generating proteins responsible for the sliding movement in axonemes. The intermediate and light chains, thought to form the base of the dynein arm, help mediate attachment and may also participate in regulating dynein activity. Mutations in this gene result in abnormal ciliary ultrastructure and function associated with primary ciliary dyskinesia and Kartagener syndrome. Alternative splicing results in multiple transcript variants.

## Recommended Dilutions

**WB** 1:500 - 1:1000**ELISA** Recommended starting concentration is 1 µg/mL. Please optimize the concentration based on your specific assay requirements.

## Immunogen Information

**Gene ID**

27019

**Swiss Prot**

Q9UI46

**Immunogen**

Recombinant protein (or fragment). This information is considered to be commercially sensitive.

**Synonyms**

PCD; DIC1; ICS1; CILD1; Dynein intermediate chain 1

## Contact

 | 400-999-6126 | [cn.market@abclonal.com.cn](mailto:cn.market@abclonal.com.cn) | [www.abclonal.com.cn](http://www.abclonal.com.cn)

## Product Information

**Source**

Rabbit

**Isotype**

IgG

**Purification**

Affinity purification

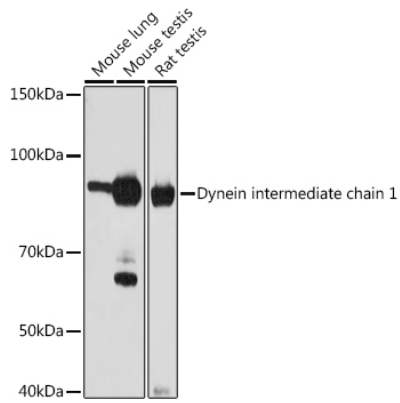
**Storage**

Store at -20°C. Avoid freeze / thaw cycles.

Buffer: PBS containing 50% glycerol and 0.05% BSA, preserved with proclin300 or sodium azide (as specified on the Certificate of Analysis), pH 7.3.

## Validation Data

---



Western blot analysis of various lysates using Dynein intermediate chain 1 Rabbit mAb (A3624) at 1:1000 dilution incubated overnight at 4°C.  
Secondary antibody: HRP-conjugated Goat anti-Rabbit IgG (H+L) (AS014) at 1:10000 dilution.  
Lysates/proteins: 25 µg per lane.  
Blocking buffer: 3% nonfat dry milk in TBST.  
Detection: ECL Basic Kit (RM00020).  
Exposure time: 60 s.