

# CoREST/RCOR1 Rabbit mAb

Catalog No.: A3568

Recombinant

1 Publications

## Basic Information

### Observed MW

65kDa

### Calculated MW

53kDa

### Category

Primary antibody

### Applications

IHC-P,IP,ELISA,CHIP

### Cross-Reactivity

Human, Mouse, Rat

### CloneNo number

ARC2044

## Background

This gene encodes a protein that is well-conserved, downregulated at birth, and with a specific role in determining neural cell differentiation. The encoded protein binds to the C-terminal domain of REST (repressor element-1 silencing transcription factor).

## Recommended Dilutions

**IHC-P** 1:200 - 1:800

**IP** 0.5µg-4µg antibody for  
200µg-400µg extracts of  
whole cells

**ELISA** Recommended starting  
concentration is 1 µg/mL.  
Please optimize the  
concentration based on  
your specific assay  
requirements.

**ChIP** 5µg antibody for  
10µg-15µg of Chromatin

## Contact

☎ | 400-999-6126

✉ | [cn.market@abclonal.com.cn](mailto:cn.market@abclonal.com.cn)

🌐 | [www.abclonal.com.cn](http://www.abclonal.com.cn)

## Immunogen Information

### Gene ID

23186

### Swiss Prot

Q9UKLO

### Immunogen

Synthetic peptide. This information is considered to be commercially sensitive.

### Synonyms

RCOR; COREST; CoREST/RCOR1

## Product Information

### Source

Rabbit

### Isotype

IgG

### Purification

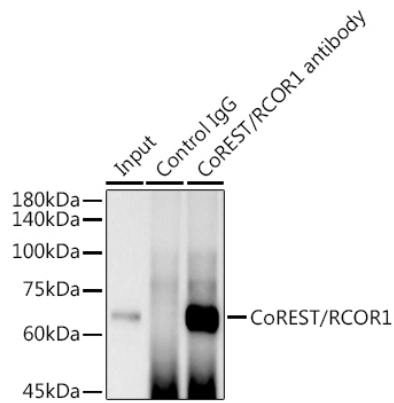
Affinity purification

### Storage

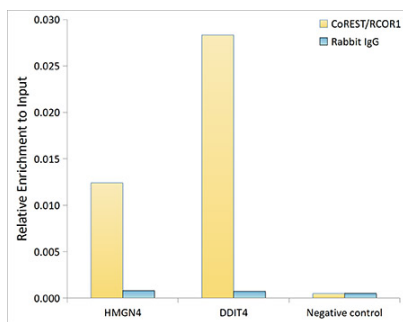
Store at -20°C. Avoid freeze / thaw cycles.

Buffer: PBS containing 50% glycerol and 0.05% BSA, preserved with proclin300 or sodium azide (as specified on the Certificate of Analysis), pH 7.3.

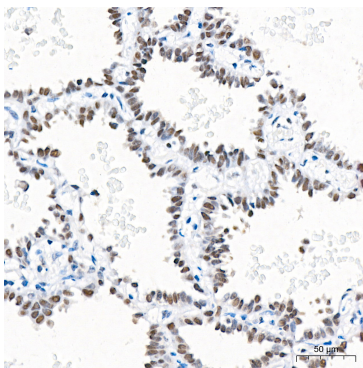
## Validation Data



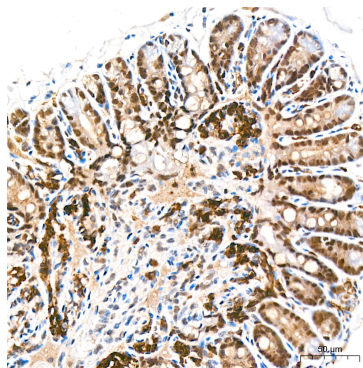
Immunoprecipitation analysis of 300 µg extracts of THP-1 cells using 3 µg CoREST/RCOR1 antibody (A3568). Western blot was performed from the immunoprecipitate using CoREST/RCOR1 antibody (A3568) at a dilution of 1:1000.



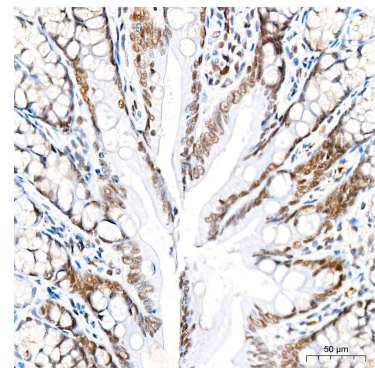
Chromatin immunoprecipitation analysis of extracts of HepG2 cells, using CoREST/RCOR1 antibody (A3568) and rabbit IgG. The amount of immunoprecipitated DNA was checked by quantitative PCR. Histogram was constructed by the ratios of the immunoprecipitated DNA to the input.



Immunohistochemistry analysis of paraffin-embedded Human lung adenocarcinoma tissue using CoREST/RCOR1 Rabbit mAb (A3568) at a dilution of 1:200 (40x lens). High pressure antigen retrieval performed with 0.01M Tris-EDTA Buffer (pH 9.0) prior to IHC staining.



Immunohistochemistry analysis of paraffin-embedded Mouse colon tissue using CoREST/RCOR1 Rabbit mAb (A3568) at a dilution of 1:200 (40x lens). High pressure antigen retrieval performed with 0.01M Tris-EDTA Buffer (pH 9.0) prior to IHC staining.



Immunohistochemistry analysis of paraffin-embedded Rat colon tissue using CoREST/RCOR1 Rabbit mAb (A3568) at a dilution of 1:200 (40x lens). High pressure antigen retrieval performed with 0.01M Tris-EDTA Buffer (pH 9.0) prior to IHC staining.