

FAM117B Rabbit pAb

Catalog No.: A3551 **1 Publications**

Basic Information

Observed MW

65kDa

Calculated MW

62kDa

Category

Primary antibody

Applications

WB, ELISA

Cross-Reactivity

Human, Mouse

Background

FAM117B (Family With Sequence Similarity 117 Member B) is a Protein Coding gene. Diseases associated with FAM117B include Lateral Sclerosis and Amyotrophic Lateral Sclerosis 2, Juvenile. An important paralog of this gene is GLCCI1.

Recommended Dilutions

WB 1:500 - 1:2000

ELISA Recommended starting concentration is 1 µg/mL. Please optimize the concentration based on your specific assay requirements.

Immunogen Information

Gene ID

150864

Swiss Prot

Q6P1L5

Immunogen

Recombinant protein (or fragment). This information is considered to be commercially sensitive.

Synonyms

ALS2CR13; FAM117B

Contact

 | 400-999-6126

 | cn.market@abclonal.com.cn

 | www.abclonal.com.cn

Product Information

Source

Rabbit

Isotype

IgG

Purification

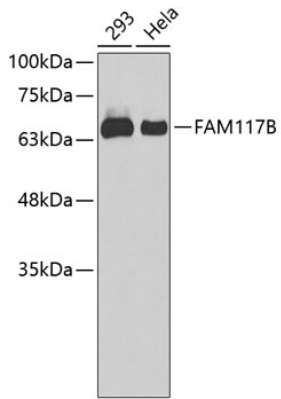
Affinity purification

Storage

Store at -20°C. Avoid freeze / thaw cycles.

Buffer: PBS with 0.01% thimerosal, 50% glycerol, pH7.3.

Validation Data



Western blot analysis of various lysates using FAM117B Rabbit pAb (A3551).
Secondary antibody: HRP-conjugated Goat anti-Rabbit IgG (H+L) (AS014) at 1:10000 dilution.
Lysates/proteins: 25µg per lane.
Blocking buffer: 3% nonfat dry milk in TBST.