

# Thyroglobulin Rabbit mAb

Catalog No.: A3405 **Recombinant**

## Basic Information

**Observed MW**

Refer to figures

**Calculated MW**

305kDa

**Category**

Primary antibody

**Applications**

ELISA, IHC-P, IF/ICC

**Cross-Reactivity**

Human

**CloneNo number**

ARC1973

## Background

Thyroglobulin (Tg) is a glycoprotein homodimer produced predominantly by the thyroid gland. It acts as a substrate for the synthesis of thyroxine and triiodothyronine as well as the storage of the inactive forms of thyroid hormone and iodine. Thyroglobulin is secreted from the endoplasmic reticulum to its site of iodination, and subsequent thyroxine biosynthesis, in the follicular lumen. Mutations in this gene cause thyroid dyshormonogenesis, manifested as goiter, and are associated with moderate to severe congenital hypothyroidism.

Polymorphisms in this gene are associated with susceptibility to autoimmune thyroid diseases (AITD) such as Graves disease and Hashimoto thyroiditis.

## Recommended Dilutions

IHC-P 1:50 - 1:200

IF/ICC 1:50 - 1:200

## Immunogen Information

**Gene ID**

7038

**Swiss Prot**

P01266

**Immunogen**

Recombinant fusion protein containing a sequence corresponding to amino acids 300-450 of human Thyroglobulin (P01266).

**Synonyms**

TGN; AITD3

## Contact

 | 400-999-6126 | [cn.market@abclonal.com.cn](mailto:cn.market@abclonal.com.cn) | [www.abclonal.com.cn](http://www.abclonal.com.cn)

## Product Information

**Source**

Rabbit

**Isotype**

IgG

**Purification**

Affinity purification

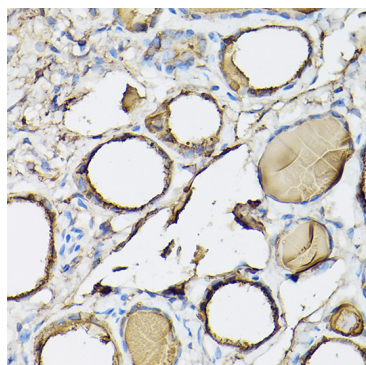
**Storage**

Store at -20°C. Avoid freeze / thaw cycles.

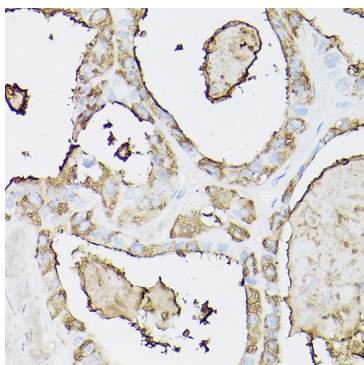
Buffer: PBS with 0.02% sodium azide, 0.05% BSA, 50% glycerol, pH7.3.

## Validation Data

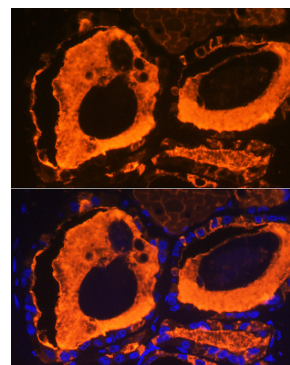
---



Immunohistochemistry analysis of paraffin-embedded Human normal thyroid using Thyroglobulin Rabbit mAb (A3405) at dilution of 1:100 (40x lens). Perform high pressure antigen retrieval with 10 mM citrate buffer pH 6.0 before commencing with IHC staining protocol.



Immunohistochemistry analysis of paraffin-embedded human thyroid cancer using Thyroglobulin Rabbit mAb (A3405) at dilution of 1:100 (40x lens). Perform high pressure antigen retrieval with 10 mM citrate buffer pH 6.0 before commencing with IHC staining protocol.



Immunofluorescence analysis of human thyroid using Thyroglobulin Rabbit mAb (A3405) at dilution of 1:100 (40x lens). Blue: DAPI for nuclear staining.