

KAT8/MYST1/MOF Rabbit mAb

Catalog No.: A3390 **Recombinant** **5 Publications**

Basic Information

Observed MW

Refer to figures

Calculated MW

52kDa

Category

Primary antibody

Applications

IF/ICC,IF-P,IHC-P,ELISA

Cross-Reactivity

Human, Rat

CloneNo number

ARC1964

Background

This gene encodes a member of the MYST histone acetylase protein family. The encoded protein has a characteristic MYST domain containing an acetyl-CoA-binding site, a chromodomain typical of proteins which bind histones, and a C2HC-type zinc finger. Multiple transcript variants encoding different isoforms have been found for this gene.

Recommended Dilutions

IF/ICC 1:200 - 1:800

IF-P 1:200 - 1:800

IHC-P 1:100 - 1:1000

ELISA Recommended starting concentration is 1 µg/mL. Please optimize the concentration based on your specific assay requirements.

Immunogen Information

Gene ID

84148

Swiss Prot

Q9H7Z6

Immunogen

Recombinant protein (or fragment). This information is considered to be commercially sensitive.

Synonyms

MOF; hMOF; MYST1; LIGOWS; ZC2HC8; KAT8/MYST1/MOF

Contact

☎ | 400-999-6126

✉ | cn.market@abclonal.com.cn

🌐 | www.abclonal.com.cn

Product Information

Source

Rabbit

Isotype

IgG

Purification

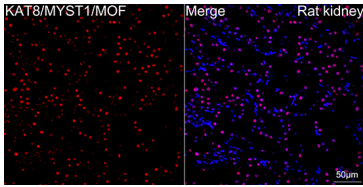
Affinity purification

Storage

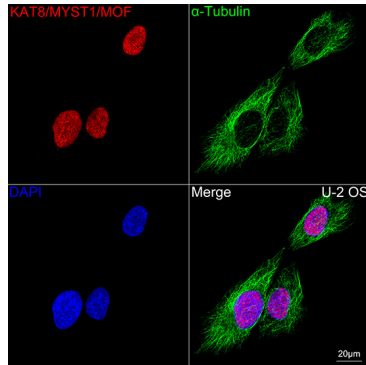
Store at -20°C. Avoid freeze / thaw cycles.

Buffer: PBS containing 50% glycerol and 0.05% BSA, preserved with proclin300 or sodium azide (as specified on the Certificate of Analysis), pH 7.3.

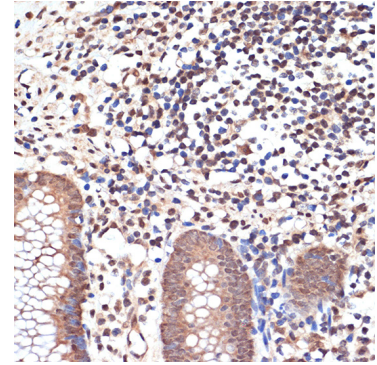
Validation Data



Confocal imaging of paraffin-embedded Rat kidney using KAT8/MYST1/MOF Rabbit mAb (A3390, dilution 1:200) followed by a further incubation with Cy3 Goat Anti-Rabbit IgG (H+L) (AS007, dilution 1:500) (Red). DAPI was used for nuclear staining (Blue). Objective: 40x. Perform high pressure antigen retrieval with 0.01 M citrate buffer (pH 6.0) prior to IF staining.



Confocal imaging of U-2 OS cells using KAT8/MYST1/MOF Rabbit mAb (A3390, dilution 1:200) followed by a further incubation with Cy3 Goat Anti-Rabbit IgG (H+L) (AS007, dilution 1:500) (Red). The cells were counterstained with α -Tubulin Mouse mAb (AC012, dilution 1:400) followed by incubation with ABflo® 488-conjugated Goat Anti-Mouse IgG (H+L) Ab (AS076, dilution 1:500) (Green). DAPI was used for nuclear staining (Blue). Objective: 100x.



Immunohistochemistry analysis of paraffin-embedded Human appendix using KAT8/MYST1/MOF Rabbit mAb (A3390) at dilution of 1:100 (40x lens). Microwave antigen retrieval performed with 0.01M Tris/EDTA Buffer (pH 9.0) prior to IHC staining.