

# NRF1 Rabbit mAb

Catalog No.: A3252

Recombinant

7 Publications

## Basic Information

**Observed MW**

68-70 kDa

**Calculated MW**

54 kDa

**Category**

Primary antibody

**Applications**

WB, IHC-P, IP, ELISA, ChIP, CUT&amp;Tag

**Cross-Reactivity**

Human, Mouse, Rat

**CloneNo number**

ARC0768

## Background

This gene encodes a protein that homodimerizes and functions as a transcription factor which activates the expression of some key metabolic genes regulating cellular growth and nuclear genes required for respiration, heme biosynthesis, and mitochondrial DNA transcription and replication. The protein has also been associated with the regulation of neurite outgrowth. Alternative splicing results in multiple transcript variants. Confusion has occurred in bibliographic databases due to the shared symbol of NRF1 for this gene and for "nuclear factor (erythroid-derived 2)-like 1" which has an official symbol of NFE2L1.

## Recommended Dilutions

**WB** 1:500 - 1:2000**IHC-P** 1:50 - 1:200**IP** 0.5µg-4µg antibody for  
200µg-400µg extracts of  
whole cells**ELISA** Recommended starting  
concentration is 1 µg/mL.  
Please optimize the  
concentration based on  
your specific assay  
requirements.**ChIP** 5µg antibody for  
10µg-15µg of Chromatin**CUT&Tag** 10<sup>5</sup> cells /1 µg

## Immunogen Information

**Gene ID**

4899

**Swiss Prot**

Q16656

**Immunogen**

Synthetic peptide. This information is considered to be commercially sensitive.

**Synonyms**

ALPHA-PAL; NRF1

## Product Information

**Source**

Rabbit

**Isotype**

IgG

**Purification**

Affinity purification

**Storage**

Store at -20°C. Avoid freeze / thaw cycles.

Buffer: PBS with 0.02% sodium azide, 0.05% BSA, 50% glycerol, pH7.3.

Contact

---

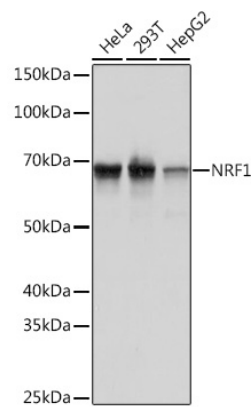
☎ | 400-999-6126

✉ | [cn.market@abclonal.com.cn](mailto:cn.market@abclonal.com.cn)

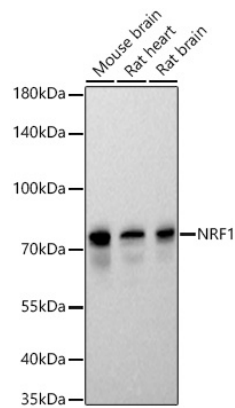
🌐 | [www.abclonal.com.cn](http://www.abclonal.com.cn)

---

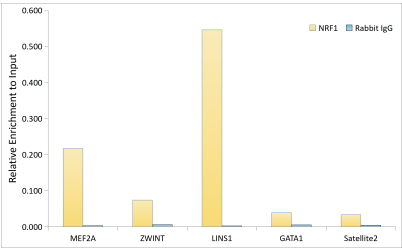
Validation Data



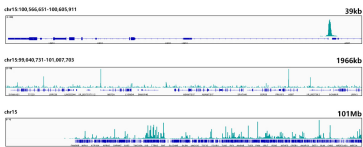
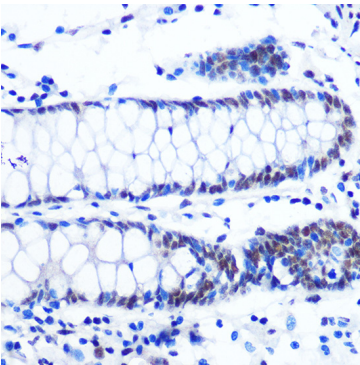
Western blot analysis of various lysates using NRF1 Rabbit mAb (A3252) at 1:1000 dilution. Secondary antibody: HRP-conjugated Goat anti-Rabbit IgG (H+L) (AS014) at 1:10000 dilution. Lysates/proteins: 25 µg per lane. Blocking buffer: 3% nonfat dry milk in TBST. Detection: ECL Basic Kit (RM00020). Exposure time: 1 s.



Western blot analysis of various lysates using NRF1 Rabbit mAb (A3252) at 1:3000 dilution incubated overnight at 4°C. Secondary antibody: HRP-conjugated Goat anti-Rabbit IgG (H+L) (AS014) at 1:10000 dilution. Lysates/proteins: 25 µg per lane. Blocking buffer: 3% nonfat dry milk in TBST. Detection: ECL Basic Kit (RM00020). Exposure time: 45 s.



Chromatin immunoprecipitation analysis of extracts of HepG2 cells, using NRF1 antibody (A3252) and rabbit IgG. The amount of immunoprecipitated DNA was checked by quantitative PCR. Histogram was constructed by the ratios of the immunoprecipitated DNA to the input.



## Validation Data

---

Immunohistochemistry analysis of paraffin-embedded Human colon using NRF1 Rabbit mAb (A3252) at dilution of 1:100 (40x lens). Microwave antigen retrieval performed with 0.01M PBS Buffer (pH 7.2) prior to IHC staining.

CUT&Tag was performed using the CUT&Tag Assay Kit (pAG-Tn5) for Illumina(RK20265) from 10<sup>5</sup> HepG2 cells with 1 µg NRF1 Rabbit mAb (A3252), along with a Goat Anti-Rabbit IgG(H+L). The CUT&Tag results indicate the enrichment pattern of NRF1 in representative gene loci (LINS1), as shown in figure.