

# E-Cadherin mouse mAb

Catalog No.: A3149 **2 Publications**

## Basic Information

### Observed MW

Refer to figures

### Calculated MW

98kDa

### Category

Primary antibody

### Applications

IHC-P, ELISA

### Cross-Reactivity

Human, Mouse, Rat

### CloneNo number

AMC0478

## Background

This gene encodes E-cadherin, a calcium-dependent cell adhesion molecule that functions in the establishment and maintenance of epithelial cell morphology during embryogenesis and adulthood. The encoded preproprotein undergoes proteolytic processing to generate a mature protein. Targeted mutations disrupting binding of calcium to the encoded protein in mice cause death in utero due to failed blastocyst and trophectoderm formation. This gene is located adjacent to a related cadherin gene on chromosome 8.

## Recommended Dilutions

**IHC-P** 1:50 - 1:200

**ELISA** Recommended starting concentration is 1 µg/mL. Please optimize the concentration based on your specific assay requirements.

## Immunogen Information

### Gene ID

12550

### Swiss Prot

P09803

### Immunogen

Recombinant protein (or fragment). This information is considered to be commercially sensitive.

### Synonyms

Um; UVO; Ecad; ARC-1; E-cad; L-CAM; E-Cadherin

## Contact

☎ | 400-999-6126

✉ | [cn.market@abclonal.com.cn](mailto:cn.market@abclonal.com.cn)

🌐 | [www.abclonal.com.cn](http://www.abclonal.com.cn)

## Product Information

### Source

Mouse

### Isotype

IgG1, Kappa

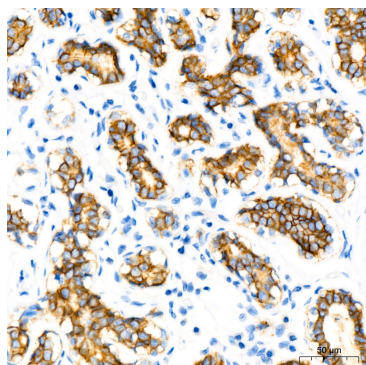
### Purification

Protein A purified

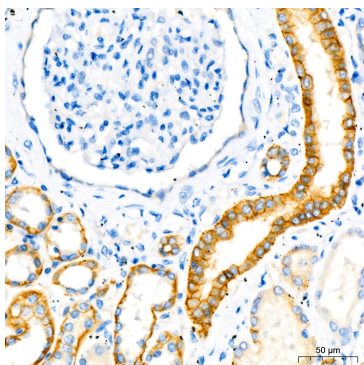
### Storage

Store at -20°C. Avoid freeze / thaw cycles.

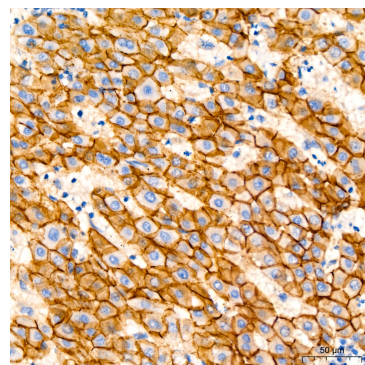
Buffer: PBS containing 50% glycerol and 0.05% BSA, preserved with proclin300 or sodium azide (as specified on the Certificate of Analysis), pH 7.3.



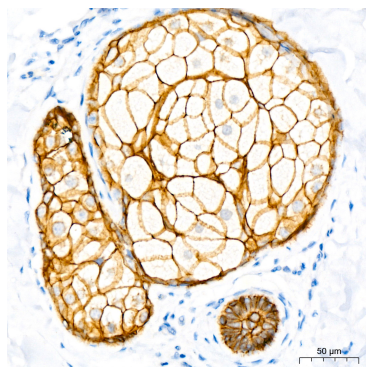
Immunohistochemistry analysis of paraffin-embedded Human breast tissue using E-Cadherin mouse mAb (A3149) at a dilution of 1:200 (40x lens). Microwave antigen retrieval performed with 0.01M Tris-EDTA Buffer (pH 9.0) prior to IHC staining.



Immunohistochemistry analysis of paraffin-embedded Human kidney tissue using E-Cadherin mouse mAb (A3149) at a dilution of 1:200 (40x lens). Microwave antigen retrieval performed with 0.01M Tris-EDTA Buffer (pH 9.0) prior to IHC staining.



Immunohistochemistry analysis of paraffin-embedded Human liver tissue using E-Cadherin mouse mAb (A3149) at a dilution of 1:200 (40x lens). Microwave antigen retrieval performed with 0.01M Tris-EDTA Buffer (pH 9.0) prior to IHC staining.



Immunohistochemistry analysis of paraffin-embedded Human skin tissue using E-Cadherin mouse mAb (A3149) at a dilution of 1:200 (40x lens). Microwave antigen retrieval performed with 0.01M Tris-EDTA Buffer (pH 9.0) prior to IHC staining.