

# PE/Cyanine7 Rabbit anti-Human/Monkey CD69 mAb

Catalog No.: A29018

## Basic Information

**Observed MW**

**Calculated MW**

**Category**

Primary antibody

**Applications**

FC

**Cross-Reactivity**

Human, Cynomolgus

**CloneNo number**

ARC68505

**Conjugate**

PE-Cy7. Ex:565nm. Em:778nm.

## Background

This gene encodes a member of the calcium dependent lectin superfamily of type II transmembrane receptors. Expression of the encoded protein is induced upon activation of T lymphocytes, and may play a role in proliferation. Furthermore, the protein may act to transmit signals in natural killer cells and platelets.

## Recommended Dilutions

**FC** 5  $\mu$ l per  $10^6$  cells in  
100  $\mu$ l volume

## Immunogen Information

**Gene ID**

Hu 969 Cyon 102141561

**Swiss Prot**

Q07108

**Immunogen**

Recombinant protein (or fragment). This information is considered to be commercially sensitive.

**Synonyms**

AIM; EA1; MLR-3; CLEC2C; GP32/28; BL-AC/P26

## Contact

 | 400-999-6126

 | [cn.market@abclonal.com.cn](mailto:cn.market@abclonal.com.cn)

 | [www.abclonal.com.cn](http://www.abclonal.com.cn)

## Product Information

**Source**

Rabbit

**Isotype**

IgG

**Purification**

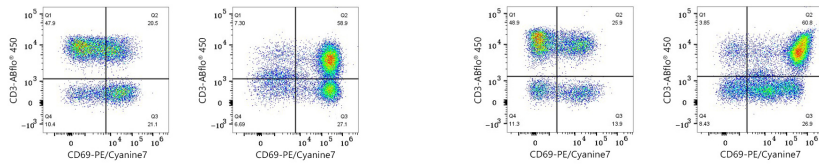
Affinity purification

**Storage**

Store at 2-8°C. Avoid freeze.

Buffer: PBS with 0.09% Sodium azide, 0.2% BSA, pH7.3.

## Validation Data



Flow cytometry:  $1 \times 10^6$  Human PBMC (untreated, left) and Human PBMC (treated with 50 ng/mL PMA and 1 µg/mL Ionomycin for 6 hours, right) were surface-stained with ABflo® 450 Rabbit anti-Human/Monkey CD3 mAb (A27177, 5 µl/Test) and PE/Cyanine7 Rabbit anti-Human/Monkey CD69 mAb (A29018, 5 µl/Test). Cells in the lymphocyte gate were used for analysis.

Flow cytometry:  $1 \times 10^6$  Cynomolgus PBMC (untreated, left) and Cynomolgus PBMC (treated with 50 ng/mL PMA and 1 µg/mL Ionomycin for 6 hours, right) were surface-stained with ABflo® 450 Rabbit anti-Human/Monkey CD3 mAb (A27177, 5 µl/Test) and PE/Cyanine7 Rabbit anti-Human/Monkey CD69 mAb (A29018, 5 µl/Test). Cells in the lymphocyte gate were used for analysis.