

TFEB Rabbit mAb

Catalog No.: A29007 **Recombinant**

Basic Information

Observed MW

65-70 kDa

Calculated MW

53 kDa

Category

Primary antibody

Applications

WB,IP,IF/ICC,ELISA

Cross-Reactivity

Mouse

CloneNo number

ARC80668

Background

Enables DNA-binding transcription activator activity, RNA polymerase II-specific; RNA polymerase II cis-regulatory region sequence-specific DNA binding activity; and protein heterodimerization activity. Involved in several processes, including defense response to Gram-negative bacterium; embryonic placenta development; and positive regulation of transcription by RNA polymerase II. Acts upstream of or within lysosome organization. Located in cytoplasm. Part of transcription regulator complex. Colocalizes with nucleus. Is expressed in several structures, including cardiovascular system; central nervous system; early conceptus; genitourinary system; and gut gland. Orthologous to human TFEB (transcription factor EB).

Recommended Dilutions

WB	1:2000 - 1:15000
IP	0.5 µg - 4 µg antibody for 200 µg - 400 µg extracts of whole cells
IF/ICC	1:200 - 1:800
ELISA	Recommended starting concentration is 1 µg/mL. Please optimize the concentration based on your specific assay requirements. For high- ratio antibody dilutions (≥1:10000) a sequential dilution method is strongly recommended to ensure measurement accuracy.

Immunogen Information

Gene ID

21425

Swiss Prot

Q9R210

Immunogen

Recombinant protein (or fragment). This information is considered to be commercially sensitive.

Synonyms

Tcfef; bHLHe35

Product Information

Source

Rabbit

Isotype

IgG

Purification

Affinity purification

Storage

Store at -20°C. Avoid freeze / thaw cycles.

Buffer: PBS with 0.09% Sodium azide, 0.05% BSA, 50% glycerol, pH7.3.

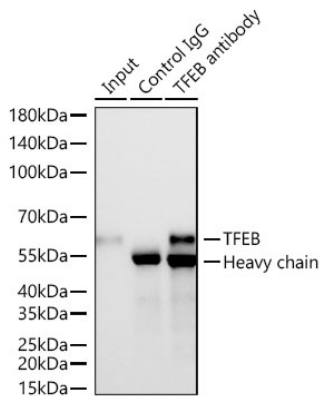
Contact

 | 400-999-6126

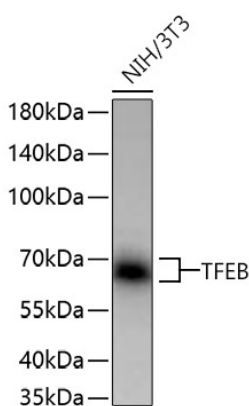
 | cn.market@abclonal.com.cn

 | www.abclonal.com.cn

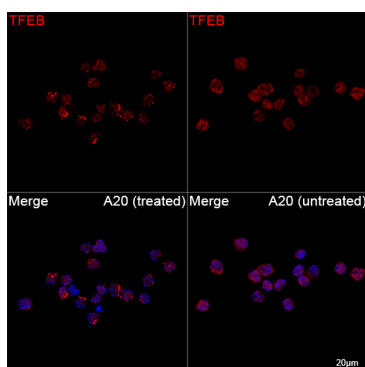
Validation Data



Immunoprecipitation of TFEB from 300 µg extracts of NIH/3T3 cells was performed using 2 µg of TFEB Rabbit mAb (A29007). Rabbit Control IgG (AC005) was used to precipitate the Control IgG sample. IP samples were eluted with 1x Laemmli Buffer. The Input lane represents 10% of the total input. Western blot analysis of immunoprecipitates was conducted using TFEB Rabbit mAb (A29007) at a dilution of 1:10000.



Western blot analysis of lysates from NIH/3T3 cells using TFEB Rabbit mAb (A29007) at 1:5000 dilution incubated at room temperature for 1.5 hours.
Secondary antibody: HRP-conjugated Goat anti-Rabbit IgG (H+L) (AS014) at 1:10000 dilution.
Lysates/proteins: 25 µg per lane.
Blocking buffer: 3% nonfat dry milk in TBST.
Detection: ECL Basic Kit (RM00020).
Exposure time: 45 s.



Confocal imaging of A20 cells (treated with Torin-1) and A20 cells (untreated) using TFEB Rabbit mAb (A29007, dilution 1:500) followed by a further incubation with Cy3-conjugated Goat anti-Rabbit IgG (H+L) (AS007, dilution 1:500) (Red). DAPI was used for nuclear staining (Blue). Objective: 100x.