

# Fibronectin Rabbit mAb

Catalog No.: A28935 **Recombinant**

## Basic Information

### Observed MW

300 kDa

### Calculated MW

272 kDa

### Category

Primary antibody

### Applications

WB,IP,IF/ICC,IHC-P,ELISA

### Cross-Reactivity

Mouse, Rat

### CloneNo number

ARC83222

## Background

Enables peptidase activator activity and receptor ligand activity. Involved in negative regulation of monocyte activation and response to muscle activity. Acts upstream of or within several processes, including calcium-independent cell-matrix adhesion; integrin-mediated signaling pathway; and positive regulation of axon extension. Located in apical plasma membrane; basement membrane; and collagen-containing extracellular matrix. Is active in extracellular space. Is expressed in several structures, including alimentary system; cardiovascular system; egg cylinder; embryo mesenchyme; and genitourinary system. Human ortholog(s) of this gene implicated in calcium oxalate nephrolithiasis; membranoproliferative glomerulonephritis; and spondylometaphyseal dysplasia corner fracture type. Orthologous to human FN1 (fibronectin 1).

## Recommended Dilutions

**WB** 1:3000 - 1:20000

**IP** 0.5 µg - 4 µg antibody for  
200 µg - 400 µg extracts  
of whole cells

**IF/ICC** 1:200 - 1:800

**IHC-P** 1:150 - 1:600

**ELISA** Recommended starting concentration is 1 µg/mL. Please optimize the concentration based on your specific assay requirements. For high-ratio antibody dilutions ( $\geq 1:10000$ ) a sequential dilution method is strongly recommended to ensure measurement accuracy.

## Immunogen Information

### Gene ID

14268

### Swiss Prot

P11276

### Immunogen

Recombinant protein (or fragment). This information is considered to be commercially sensitive.

### Synonyms

Fn; Fn-1; E330027109

## Product Information

### Source

Rabbit

### Isotype

IgG

### Purification

Affinity purification

### Storage

Store at -20°C. Avoid freeze / thaw cycles.

Buffer: PBS with 0.09% Sodium azide, 0.05% BSA, 50% glycerol, pH7.3.

## Contact

---

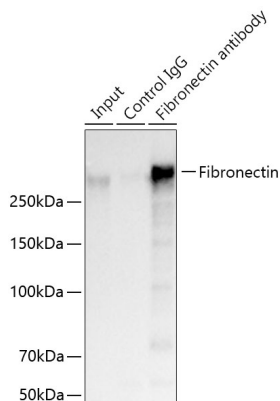
 | 400-999-6126

 | [cn.market@abclonal.com.cn](mailto:cn.market@abclonal.com.cn)

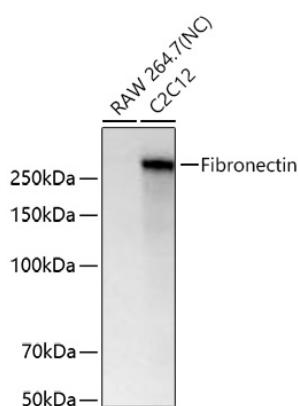
 | [www.abclonal.com.cn](http://www.abclonal.com.cn)

---

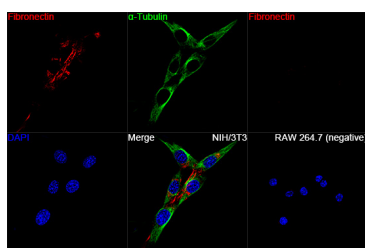
## Validation Data



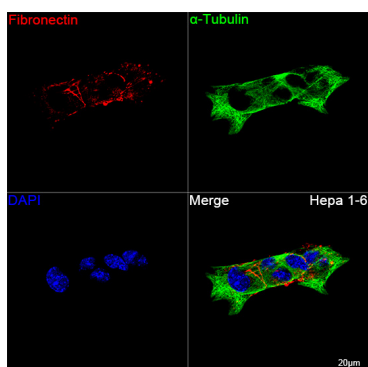
Immunoprecipitation of Fibronectin from 300 µg extracts of NIH/3T3 cells was performed using 2 µg of Fibronectin Rabbit mAb (A28935). Rabbit Control IgG (AC005) was used to precipitate the Control IgG sample. IP samples were eluted with 1x Laemmli Buffer. The Input lane represents 10% of the total input. Western blot analysis of immunoprecipitates was conducted using Fibronectin Rabbit mAb (A28935) at a dilution of 1:10000.



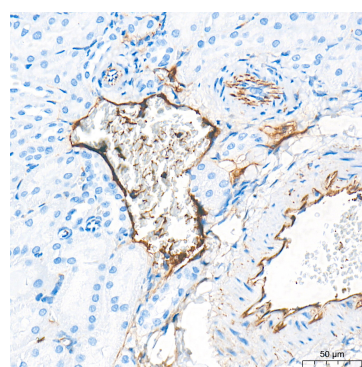
Western blot analysis of various lysates using Fibronectin Rabbit mAb (A28935) at 1:5000 dilution incubated overnight at 4°C. Secondary antibody: HRP-conjugated Goat anti-Rabbit IgG (H+L) (AS014) at 1:10000 dilution. Lysates/proteins: 25 µg per lane. Blocking buffer: 3% nonfat dry milk in TBST. Detection: ECL Basic Kit (RM00020). Negative control (NC): RAW 264.7. Exposure time: 1 s.



Confocal imaging of NIH/3T3 cells and RAW 264.7 cells (negative) using Fibronectin Rabbit mAb (A28935, dilution 1:200) followed by a further incubation with Cy3-conjugated Goat anti-Rabbit IgG (H+L) (AS007, dilution 1:500) (Red). The cells were counterstained with α-Tubulin Mouse mAb (AC012, dilution 1:400) followed by incubation with ABflo® 488-conjugated Goat Anti-Mouse IgG (H+L) Ab (AS076, dilution 1:500) (Green). DAPI was used for nuclear staining (Blue). Objective: 100x.



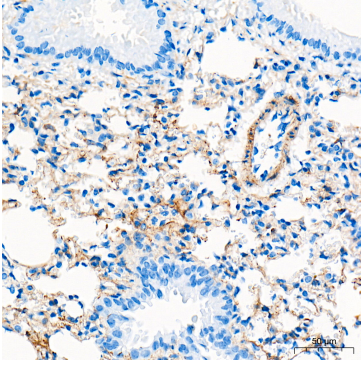
Confocal imaging of Hepa 1-6 cells using Fibronectin Rabbit mAb (A28935, dilution 1:200) followed by a further incubation with Cy3-conjugated Goat anti-Rabbit IgG (H+L) (AS007, dilution 1:500) (Red). The cells were counterstained with α-Tubulin Mouse mAb (AC012, dilution 1:400) followed by incubation with ABflo® 488-conjugated Goat Anti-Mouse IgG (H+L) Ab (AS076, dilution 1:500) (Green). DAPI was used for nuclear staining (Blue). Objective: 100x.



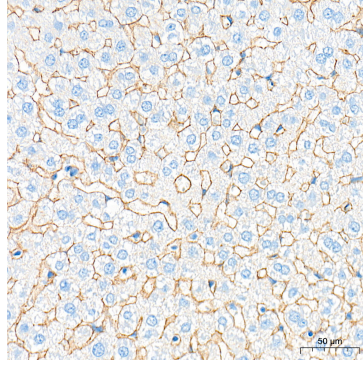
Immunohistochemistry analysis of paraffin-embedded Rat kidney tissue using Fibronectin Rabbit mAb (A28935) at a dilution of 1:500 (40x lens). High pressure antigen retrieval performed with 0.01M Tris-EDTA Buffer (pH 9.0) prior to IHC staining.

## Validation Data

---



Immunohistochemistry analysis of paraffin-embedded Mouse lung tissue using Fibronectin Rabbit mAb (A28935) at a dilution of 1:500 (40x lens). High pressure antigen retrieval performed with 0.01M Tris-EDTA Buffer (pH 9.0) prior to IHC staining.



Immunohistochemistry analysis of paraffin-embedded Rat liver tissue using Fibronectin Rabbit mAb (A28935) at a dilution of 1:500 (40x lens). High pressure antigen retrieval performed with 0.01M Tris-EDTA Buffer (pH 9.0) prior to IHC staining.