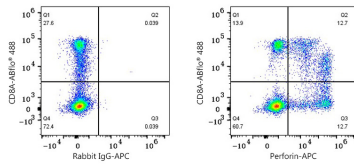


Validation Data



Flow cytometry: 1×10^6 Human PBMC were surface-stained with ABflo® 488 Rabbit anti-Human/Monkey CD8a mAb (A23345,5 μ l/Test) and then intracellularly-stained with APC Rabbit IgG isotype control (A24173,5 μ l/Test,left) or APC Rabbit anti-Human Perforin mAb (A28930,5 μ l/Test,right). Cells in the lymphocyte gate were used for analysis.