

# ABflo® 450 Rabbit anti-Human/Monkey CD69 mAb

Catalog No.: A28920

## Basic Information

### Observed MW

### Calculated MW

### Category

Primary antibody

### Applications

FC

### Cross-Reactivity

Human, Cynomolgus

### CloneNo number

ARC68505

### Conjugate

ABflo® 450. Ex:406nm. Em:445nm.

## Background

This gene encodes a member of the calcium dependent lectin superfamily of type II transmembrane receptors. Expression of the encoded protein is induced upon activation of T lymphocytes, and may play a role in proliferation. Furthermore, the protein may act to transmit signals in natural killer cells and platelets.

## Recommended Dilutions

FC 5 µl per 10<sup>6</sup> cells in  
100 µl volume

## Immunogen Information

**Gene ID**  
969

**Swiss Prot**  
Q07108

### Immunogen

Recombinant protein (or fragment). This information is considered to be commercially sensitive.

### Synonyms

AIM; EA1; MLR-3; CLEC2C; GP32/28; BL-AC/P26

## Contact

☎ | 400-999-6126

✉ | [cn.market@abclonal.com.cn](mailto:cn.market@abclonal.com.cn)

🌐 | [www.abclonal.com.cn](http://www.abclonal.com.cn)

## Product Information

**Source**  
Rabbit

**Isotype**  
IgG

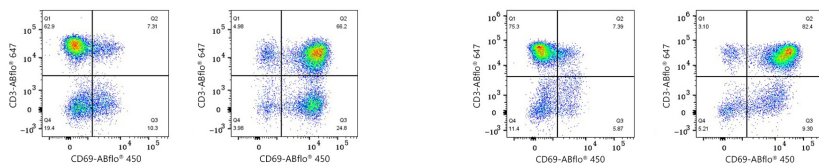
**Purification**  
Affinity purification

### Storage

Store at 2-8°C. Avoid freeze.

Buffer: PBS with 0.09% Sodium azide, 0.2% BSA, pH7.3.

## Validation Data



Flow cytometry:  $1 \times 10^6$  Human PBMC (untreated, left) and Human PBMC (treated with 50 ng/mL PMA and 1 µg/mL Ionomycin for 6 hours, right) were surface-stained with ABflo® 647 Rabbit anti-Human/Monkey CD3 mAb (A26284, 5 µl/Test) and ABflo® 450 Rabbit anti-Human/Monkey CD69 mAb (A28920, 5 µl/Test). Cells in the lymphocyte gate were used for analysis.

Flow cytometry:  $1 \times 10^6$  Cynomolgus PBMC (untreated, left) and Cynomolgus PBMC (treated with 50 ng/mL PMA and 1 µg/mL Ionomycin for 6 hours, right) were surface-stained with ABflo® 647 Rabbit anti-Human/Monkey CD3 mAb (A26284, 5 µl/Test) and ABflo® 450 Rabbit anti-Human/Monkey CD69 mAb (A28920, 5 µl/Test). Cells in the lymphocyte gate were used for analysis.