

ABflo® 610 Rabbit anti-Human/Monkey CD19 mAb

Catalog No.: A28919

Basic Information

Observed MW

Calculated MW

Category

Primary antibody

Applications

FC

Cross-Reactivity

Human, Cynomolgus

CloneNo number

ARC57915

Conjugate

ABflo® 610. Ex:421nm. Em:612nm.

Recommended Dilutions

FC 5 µl per 10⁶ cells in
100 µl volume

Contact

☎ | 400-999-6126

✉ | cn.market@abclonal.com.cn

🌐 | www.abclonal.com.cn

Background

This gene encodes a member of the immunoglobulin gene superfamily. Expression of this cell surface protein is restricted to B cell lymphocytes. This protein is a reliable marker for pre-B cells but its expression diminishes during terminal B cell differentiation in antibody secreting plasma cells. The protein has two N-terminal extracellular Ig-like domains separated by a non-Ig-like domain, a hydrophobic transmembrane domain, and a large C-terminal cytoplasmic domain. This protein forms a complex with several membrane proteins including complement receptor type 2 (CD21) and tetraspanin (CD81) and this complex reduces the threshold for antigen-initiated B cell activation. Activation of this B-cell antigen receptor complex activates the phosphatidylinositol 3-kinase signalling pathway and the subsequent release of intracellular stores of calcium ions. This protein is a target of chimeric antigen receptor (CAR) T-cells used in the treatment of lymphoblastic leukemia. Mutations in this gene are associated with the disease common variable immunodeficiency 3 (CVID3) which results in a failure of B-cell differentiation and impaired secretion of immunoglobulins. CVID3 is characterized by hypogammaglobulinemia, an inability to mount an antibody response to antigen, and recurrent bacterial infections. Alternative splicing results in multiple transcript variants encoding distinct isoforms.

Immunogen Information

Gene ID

102145514

Swiss Prot

Immunogen

Recombinant protein (or fragment). This information is considered to be commercially sensitive.

Synonyms

CD19

Product Information

Source

Rabbit

Isotype

IgG

Purification

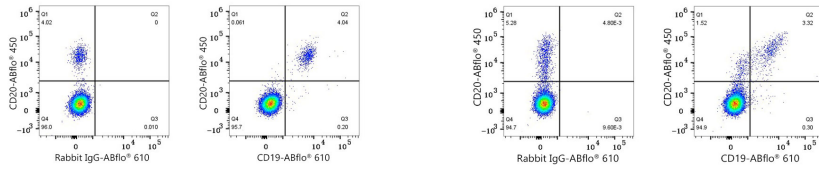
Affinity purification

Storage

Store at 2-8°C. Avoid freeze.

Buffer: PBS with 0.09% Sodium azide, 0.2% BSA, pH7.3.

Validation Data



Flow cytometry: 1×10^6 Human PBMC were surface-stained with ABflo® 450 Rabbit anti-Human/Monkey CD20 mAb (A26465,5 $\mu\text{l}/\text{Test}$) and ABflo® 610 Rabbit IgG isotype control (A25826,5 $\mu\text{l}/\text{Test}$,left) or ABflo® 610 Rabbit anti-Human/Monkey CD19 mAb (A28919,5 $\mu\text{l}/\text{Test}$,right). Cells in the lymphocyte gate were used for analysis.

Flow cytometry: 1×10^6 Cynomolgus PBMC were surface-stained with ABflo® 450 Rabbit anti-Human/Monkey CD20 mAb (A26465,5 $\mu\text{l}/\text{Test}$) and ABflo® 610 Rabbit IgG isotype control (A25826,5 $\mu\text{l}/\text{Test}$,left) or ABflo® 610 Rabbit anti-Human/Monkey CD19 mAb (A28919,5 $\mu\text{l}/\text{Test}$,right). Cells in the lymphocyte gate were used for analysis.