

CX3CR1 Rabbit pAb

Catalog No.: A2890 **5 Publications**

Basic Information

Observed MW

52kDa

Calculated MW

40kDa

Category

Primary antibody

Applications

WB,IHC-P,ELISA

Cross-Reactivity

Human, Mouse, Rat

Background

Fractalkine is a transmembrane protein and chemokine involved in the adhesion and migration of leukocytes. The protein encoded by this gene is a receptor for fractalkine. The encoded protein also is a coreceptor for HIV-1, and some variations in this gene lead to increased susceptibility to HIV-1 infection and rapid progression to AIDS. Four transcript variants encoding two different isoforms have been found for this gene.

Recommended Dilutions

WB 1:500 - 1:1000

IHC-P 1:50 - 1:200

ELISA Recommended starting concentration is 1 µg/mL. Please optimize the concentration based on your specific assay requirements.

Immunogen Information

Gene ID

1524

Swiss Prot

P49238

Immunogen

Synthetic peptide. This information is considered to be commercially sensitive.

Synonyms

V28; CCRL1; GPR13; CMKDR1; GPRV28; CMKBRL1; CX3CR1

Contact

☎ | 400-999-6126

✉ | cn.market@abclonal.com.cn

🌐 | www.abclonal.com.cn

Product Information

Source

Rabbit

Isotype

IgG

Purification

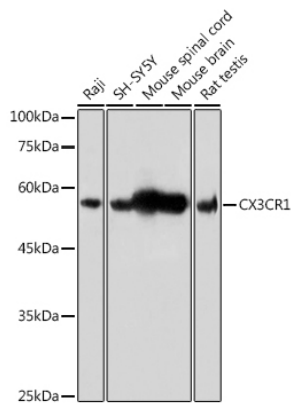
Affinity purification

Storage

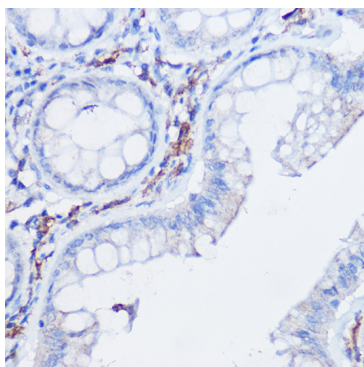
Store at -20°C. Avoid freeze / thaw cycles.

Buffer: PBS containing 50% glycerol, preserved with proclin300 or sodium azide (as specified on the Certificate of Analysis), pH 7.3.

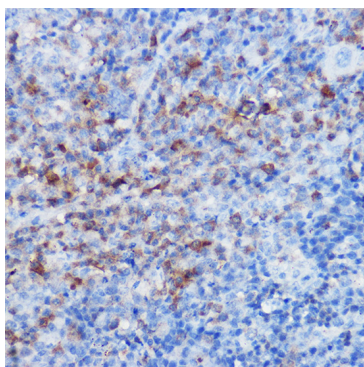
Validation Data



Western blot analysis of various lysates using CX3CR1 Rabbit pAb (A2890) at 1:500 dilution. Secondary antibody: HRP-conjugated Goat anti-Rabbit IgG (H+L) (AS014) at 1:10000 dilution. Lysates/proteins: 25µg per lane. Blocking buffer: 3% nonfat dry milk in TBST. Detection: ECL Basic Kit (RM00020). Exposure time: 1s.



Immunohistochemistry analysis of paraffin-embedded Human colon carcinoma using CX3CR1 Rabbit pAb (A2890) at dilution of 1:20 (40x lens). Microwave antigen retrieval performed with 0.05M Tris/EDTA Buffer (pH 8.0) prior to IHC staining.



Immunohistochemistry analysis of paraffin-embedded Rat spleen using CX3CR1 Rabbit pAb (A2890) at dilution of 1:20 (40x lens). Microwave antigen retrieval performed with 0.05M Tris/EDTA Buffer (pH 8.0) prior to IHC staining.