

ABflo® 647 Rabbit anti-Mouse CD11b mAb

Catalog No.: A28882

Basic Information

Observed MW

Calculated MW

Category

Primary antibody

Applications

FC

Cross-Reactivity

Mouse

CloneNo number

ARC63899

Conjugate

ABflo® 647. Ex:648nm. Em:664nm.

Background

Enables complement component C3b binding activity; heparan sulfate proteoglycan binding activity; and heparin binding activity. Contributes to cargo receptor activity. Involved in several processes, including central nervous system development; endocytosis; and positive regulation of neuron death. Acts upstream of or within several processes, including activated T cell proliferation; leukocyte migration; and microglia development. Located in external side of plasma membrane and nucleus. Is integral component of membrane. Part of integrin alphaM-beta2 complex. Is expressed in several structures, including central nervous system; heart; lymphatic vessel; thymus; and yolk sac. Human ortholog(s) of this gene implicated in lupus nephritis. Orthologous to human ITGAM (integrin subunit alpha M).

Recommended Dilutions

FC ≤0.5 µg per million cells
in 100 µl volume

Immunogen Information

Gene ID

16409

Swiss Prot

P05555

Immunogen

Recombinant protein (or fragment). This information is considered to be commercially sensitive.

Synonyms

CR3; CR3A; MAC1; Cd11b; Ly-40; Mac-1; Mac-1a; CD11b/CD18; F730045J24Rik

Contact

☎ | 400-999-6126

✉ | cn.market@abclonal.com.cn

🌐 | www.abclonal.com.cn

Product Information

Source

Rabbit

Isotype

IgG

Purification

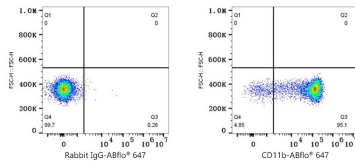
Affinity purification

Storage

Store at 2-8°C. Avoid freeze.

Buffer: PBS with 0.09% Sodium azide, 0.2% BSA, pH7.3.

Validation Data



Flow cytometry: 1X10⁶ C57BL/6 mouse bone marrow cells were surface-stained with ABflo® 647 Rabbit IgG isotype control (A22070, 5 µl/Test, left) or ABflo® 647 Rabbit anti-Mouse CD11b mAb (A28882, 0.5 µg, right).