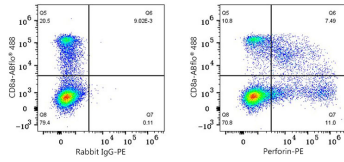


Validation Data



Flow cytometry: 1×10^6 Human PBMC were surface-stained with ABflo® 488 Rabbit anti-Human/Monkey CD8a mAb (A23345,5 μ l/Test) and then intracellularly-stained with PE Rabbit IgG isotype control (A24172,5 μ l/Test, left) or PE Rabbit anti-Human Performin mAb (A28870,5 μ l/Test, right). Cells in the lymphocyte gate were used for analysis.