

# Anti-Monkey S100A8 PolymAb®

Catalog No.: A28859PM

## Basic Information

### Observed MW

### Calculated MW

10 kDa/11 kDa

### Category

Primary antibody

### Applications

IHC-P

### Cross-Reactivity

Cynomolgus monkey

## Background

The protein encoded by this gene is a member of the S100 family of proteins containing 2 EF-hand calcium-binding motifs. S100 proteins are localized in the cytoplasm and/or nucleus of a wide range of cells, and involved in the regulation of a number of cellular processes such as cell cycle progression and differentiation. S100 genes include at least 13 members which are located as a cluster on chromosome 1q21. This protein may function in the inhibition of casein kinase and as a cytokine. Altered expression of this protein is associated with the disease cystic fibrosis. Multiple transcript variants encoding different isoforms have been found for this gene. Predicted to enable calcium ion binding activity and calcium-dependent protein binding activity. Acts upstream of or within astrocyte development and positive regulation of peptide secretion. Predicted to be located in cytosol; extracellular space; and intermediate filament cytoskeleton. Predicted to be part of S100A8 complex and calprotectin complex. Predicted to be active in cytoplasm. Is expressed in several structures, including bone marrow; extraembryonic component; liver; mesometrium; and placenta. Human ortholog(s) of this gene implicated in myocarditis. Orthologous to human S100A8 (S100 calcium binding protein A8).

## Recommended Dilutions

IHC-P 1:2000 - 1:8000

## Immunogen Information

### Gene ID

6279/20201

### Swiss Prot

P05109/P27005

### Immunogen

This information is considered to be commercially sensitive.

### Synonyms

P8; MIF; NIF; CAGA; CFAG; CGLA; L1Ag; MRP8; CP-10; MA387; 60B8AG; S100-A8; S100A8; B8Ag; CFAG; Caga; 60B8Ag

## Contact

☎ | 400-999-6126

✉ | [cn.market@abclonal.com.cn](mailto:cn.market@abclonal.com.cn)

🌐 | [www.abclonal.com.cn](http://www.abclonal.com.cn)

## Product Information

### Source

Rabbit

### Isotype

IgG

### Purification

Affinity purification

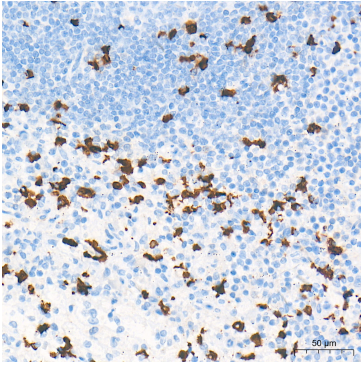
### Storage

Store at -20°C. Avoid freeze / thaw cycles.

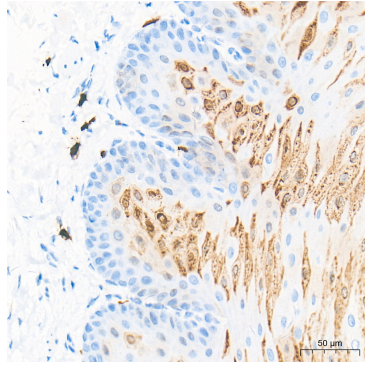
Buffer: PBS with 0.09% Sodium azide, 0.05% BSA, 50% glycerol, pH7.3.

## Validation Data

---



Immunohistochemistry analysis of paraffin-embedded Cynomolgus monkey spleen tissue using Anti-Monkey S100A8 PolymAb® (A28859PM) at a dilution of 1:4000 (40x lens). High pressure antigen retrieval performed with 0.01M Tris-EDTA Buffer (pH 9.0) prior to IHC staining.



Immunohistochemistry analysis of paraffin-embedded Cynomolgus monkey esophagus tissue using Anti-Monkey S100A8 PolymAb® (A28859PM) at a dilution of 1:4000 (40x lens). High pressure antigen retrieval performed with 0.01M Tris-EDTA Buffer (pH 9.0) prior to IHC staining.