

IL-18 Rabbit mAb

Catalog No.: A28848 **Recombinant**

Basic Information

Observed MW

18 kDa (mature form)/22 kDa (precursor)

Calculated MW

22 kDa

Category

Primary antibody

Applications

WB,IF-F,IHC-P,ELISA

Cross-Reactivity

Human, Mouse, Rat

CloneNo number

ARC81776

Background

Enables cytokine activity. Involved in several processes, including cholesterol homeostasis; establishment of skin barrier; and positive regulation of cell differentiation. Acts upstream of or within several processes, including natural killer cell mediated cytotoxicity; negative regulation of myoblast differentiation; and positive regulation of type II interferon production. Is active in extracellular space. Is expressed in extraembryonic component; gut; lymphatic system; reproductive system; and trunk. Used to study atopic dermatitis. Human ortholog(s) of this gene implicated in several diseases, including Kawasaki disease; allergic rhinitis; autoimmune disease (multiple); biliary atresia; and hepatitis B. Orthologous to human IL18 (interleukin 18).

Recommended Dilutions

WB 1:3000 - 1:15000

IF-F 1:100 - 1:400

IHC-P 1:500 - 1:2000

ELISA Recommended starting concentration is 1 µg/mL. Please optimize the concentration based on your specific assay requirements. For high-ratio antibody dilutions ($\geq 1:10000$) a sequential dilution method is strongly recommended to ensure measurement accuracy.

Immunogen Information

Gene ID

16173

Swiss Prot

P70380

Immunogen

Recombinant protein (or fragment). This information is considered to be commercially sensitive.

Synonyms

IgIF; IL-18

Product Information

Source

Rabbit

Isotype

IgG

Purification

Affinity purification

Storage

Store at -20°C. Avoid freeze / thaw cycles.

Buffer: PBS with 0.09% Sodium azide, 0.05% BSA, 50% glycerol, pH7.3.

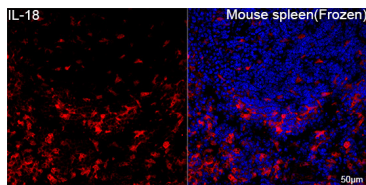
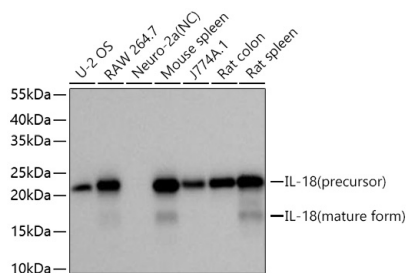
Contact

 | 400-999-6126

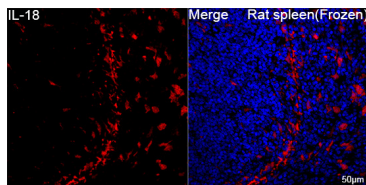
 | cn.market@abclonal.com.cn

 | www.abclonal.com.cn

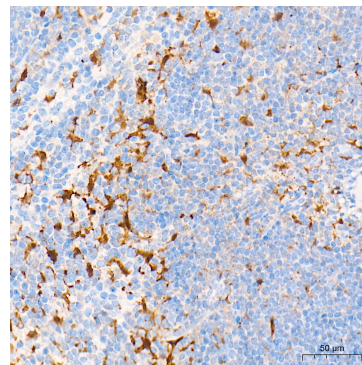
Validation Data



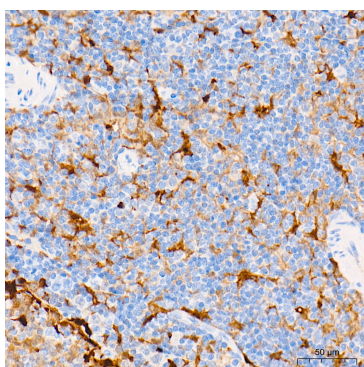
Confocal imaging of frozen sections of Mouse spleen tissue using IL-18 Rabbit mAb (A28848, dilution 1:200) followed by a further incubation with Cy3-conjugated Goat anti-Rabbit IgG (H+L) (AS007, dilution 1:500) (Red). DAPI was used for nuclear staining (Blue). Microwave antigen retrieval performed with 0.01M Citrate Buffer (pH 6.0) prior to IF staining. Objective: 40x.



Confocal imaging of frozen sections of Rat spleen tissue using IL-18 Rabbit mAb (A28848, dilution 1:200) followed by a further incubation with Cy3-conjugated Goat anti-Rabbit IgG (H+L) (AS007, dilution 1:500) (Red). DAPI was used for nuclear staining (Blue). Microwave antigen retrieval performed with 0.01M Citrate Buffer (pH 6.0) prior to IF staining. Objective: 40x.



Immunohistochemistry analysis of paraffin-embedded Mouse spleen tissue using IL-18 Rabbit mAb (A28848) at a dilution of 1:1000 (40x lens). High pressure antigen retrieval performed with 0.01M Tris-EDTA Buffer (pH 9.0) prior to IHC staining.



Immunohistochemistry analysis of paraffin-embedded Rat spleen tissue using IL-18 Rabbit mAb (A28848) at a dilution of 1:1000 (40x lens). High pressure antigen retrieval performed with 0.01M Tris-EDTA Buffer (pH 9.0) prior to IHC staining.