

ABflo® 500 Rabbit anti-Human CD21/CR2 mAb

Catalog No.: A28845

Basic Information

Observed MW

Calculated MW

Category

Primary antibody

Applications

FC

Cross-Reactivity

Human

CloneNo number

ARC56643

Conjugate

ABflo® 500. Ex:410nm. Em:501nm.

Background

This gene encodes a membrane protein, which functions as a receptor for Epstein-Barr virus (EBV) binding on B and T lymphocytes. Genetic variations in this gene are associated with susceptibility to systemic lupus erythematosus type 9 (SLEB9). Alternatively spliced transcript variants encoding different isoforms have been found for this gene.

Recommended Dilutions

FC 5 µl per 10⁶ cells in
100 µl volume

Immunogen Information

Gene ID

1380

Swiss Prot

P20023

Immunogen

Recombinant protein (or fragment). This information is considered to be commercially sensitive.

Synonyms

C3DR; CD21; CR; CVID7; SLEB9

Contact

☎ | 400-999-6126

✉ | cn.market@abclonal.com.cn

🌐 | www.abclonal.com.cn

Product Information

Source

Rabbit

Isotype

IgG

Purification

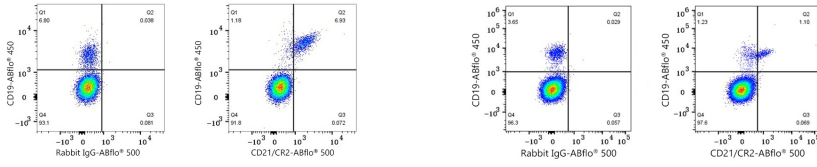
Affinity purification

Storage

Store at 2-8°C. Avoid freeze.

Buffer: PBS with 0.09% Sodium azide, 0.2% BSA, pH7.3.

Validation Data



Flow cytometry: 1×10^6 Human PBMC were surface-stained with ABflo® 450 Rabbit anti-Human/Monkey CD19 mAb (A27286,5 $\mu\text{l}/\text{Test}$) and ABflo® 500 Rabbit IgG isotype control (A25972,5 $\mu\text{l}/\text{Test}$,left) or ABflo® 500 Rabbit anti-Human CD21/CR2 mAb (A28845,5 $\mu\text{l}/\text{Test}$,right). Cells in the lymphocyte gate were used for analysis.

Flow cytometry: 1×10^6 Cynomolgus peripheral blood mononuclear cells were surface-stained with ABflo® 450 Rabbit anti-Human/Monkey CD19 mAb (A27286,5 $\mu\text{l}/\text{Test}$) and ABflo® 500 Rabbit IgG isotype control (A25972,5 $\mu\text{l}/\text{Test}$,left) or ABflo® 500 Rabbit anti-Human/Monkey CR2/CD21 mAb (A28845,5 $\mu\text{l}/\text{Test}$,right). Cells in the lymphocyte gate were used for analysis.