

PE Rabbit anti-Mouse CD135/FLT3 mAb

Catalog No.: A28842

Basic Information

Observed MW**Calculated MW****Category**

Primary antibody

Applications

FC

Cross-Reactivity

Mouse

CloneNo number

ARC75548

Conjugate

PE. Ex:565nm. Em:574nm.

Background

Enables several functions, including phosphatidylinositol 3-kinase binding activity; protein tyrosine kinase activity; and ubiquitin protein ligase binding activity. Involved in several processes, including common myeloid progenitor cell proliferation; hemopoiesis; and lymphocyte proliferation. Acts upstream of or within several processes, including dendritic cell homeostasis; hematopoietic or lymphoid organ development; and regulation of cytokine production. Located in external side of plasma membrane. Is expressed in several structures, including brain; dorsal aorta; immune system; reproductive system; and spinal cord. Used to study acute myeloid leukemia and juvenile myelomonocytic leukemia. Human ortholog(s) of this gene implicated in acute lymphoblastic leukemia; acute myeloid leukemia; colorectal adenocarcinoma; hepatocellular carcinoma; and prostate cancer. Orthologous to human FLT3 (fms related receptor tyrosine kinase 3).

Recommended Dilutions

FC ≤0.25 µg per million cells
in 100 µl volume

Immunogen Information

Gene ID

14255

Swiss Prot

Q00342

Immunogen

Recombinant protein (or fragment). This information is considered to be commercially sensitive.

Synonyms

B230315G04; CD135; Flk-2; Flk2; Flt-3; Ly72; wmf1

Contact

 | 400-999-6126 | cn.market@abclonal.com.cn | www.abclonal.com.cn

Product Information

Source

Rabbit

Isotype

IgG

Purification

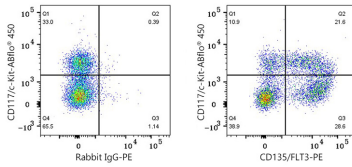
Affinity purification

Storage

Store at 2-8°C. Avoid freeze.

Buffer: PBS with 0.09% Sodium azide, 0.2% BSA, pH7.3.

Validation Data



Flow cytometry: 1×10^6 C57BL/6 mouse bone marrow cells were surface-stained with ABflo® 450 Rabbit anti-Mouse CD117/c-Kit mAb (A25474, 5 μ l/Test) and PE Rabbit IgG isotype control (A24172, 5 μ l/Test, left) or PE Rabbit anti-Mouse CD135/FLT3 mAb (A28842, 0.25 μ g, right). Cells in the lineage-negative (lin⁻) gate (negative for CD3, CD19, CD11b, Gr-1, Ter119, CD45R/B220) were used for analysis.