

PE Rabbit anti-Monkey/Human CD159a mAb

Catalog No.: A28835

Basic Information

Observed MW

Calculated MW

Category

Primary antibody

Applications

FC

Cross-Reactivity

Human, Cynomolgus

CloneNo number

ARC82683

Conjugate

PE. Ex:565nm. Em:574nm.

Background

CD159a (also known as NKG2A, encoded by the KLRC1 gene) is an inhibitory receptor on the surface of natural killer (NK) cells and some T cells. After binding to HLA-E molecules, it transmits inhibitory signals to regulate the activity of immune cells. Some viruses (such as HIV and CMV) upregulate the expression of HLA-E to bind to CD159a and inhibit the function of NK cells. Blocking the NKG2A/HLA-E pathway can restore antiviral immunity.

Recommended Dilutions

FC 5 μ l per 10^6 cells in
100 μ l volume

Immunogen Information

Gene ID

102121106

Swiss Prot

[P08627](#)

Immunogen

Recombinant protein (or fragment). This information is considered to be commercially sensitive.

Synonyms

nkg2A

Contact

 | 400-999-6126

 | cn.market@abclonal.com.cn

 | www.abclonal.com.cn

Product Information

Source

Rabbit

Isotype

IgG

Purification

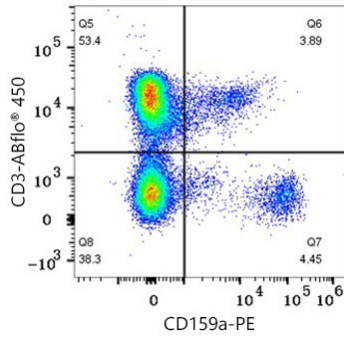
Affinity purification

Storage

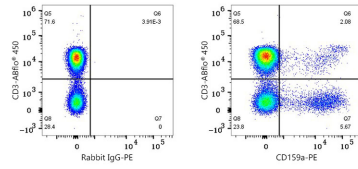
Store at 2-8°C. Avoid freeze.

Buffer: PBS with 0.09% Sodium azide, 0.2% BSA, pH7.3.

Validation Data



Flow cytometry: 1X10⁶ Cynomolgus PBMC were surface-stained with ABflo® 450 Rabbit anti-Human/Monkey CD3 mAb (A27177,5 µl/Test) and PE Rabbit anti-Monkey/Human CD159a mAb (A28835,5 µl/Test). Cells in the lymphocyte gate were used for analysis.



Flow cytometry: 1X10⁶ Human PBMC were surface-stained with ABflo® 450 Rabbit anti-Human/Monkey CD3 mAb (A27177,5 µl/Test) and PE Rabbit IgG isotype control (A24172,5 µl/Test,left) or PE Rabbit anti-Monkey/Human CD159a mAb (A28835,5 µl/Test,right). Cells in the lymphocyte gate were used for analysis.