

FITC Rabbit anti-Human MPO mAb

Catalog No.: A28807

Basic Information

Observed MW

Calculated MW

Category

Primary antibody

Applications

FC (intra)

Cross-Reactivity

Human

CloneNo number

ARC77502

Conjugate

FITC. Ex:491nm. Em:516nm.

Background

The MPO gene encodes myeloperoxidase, a lysosomal heme protein located in the azurophilic granules of polymorphonuclear (PMN) leukocytes and monocytes. In response to stimulation, MPO is activated to a transient intermediate with potent antimicrobial oxidizing capacity (PMID: 17650507). The mRNA is translated into a single 90 kDa protein that exhibits enzymatic activity and undergoes proteolytic maturation into a 59 kDa heavy chain and a 13.5 kDa light chain; these subunits then dimerize to form the mature tetramer, with mature MPO being a heterotetramer composed of two identical heavy chains and two identical light chains (PMID: 12773517). The 24 kDa material has a profile identical to that of the 13.5 kDa subunit, representing the dimer of the 13.5 kDa subunit (PMID: 3008892). Deficiency of MPO is the cause of myeloperoxidase deficiency (MPOD). It has three isoforms generated by alternative splicing. This antibody is specific for MPO virus.

Recommended Dilutions

FC (intra) 5 μ l per 10^6 cells in
100 μ l volume

Immunogen Information

Gene ID

4353

Swiss Prot

P05164

Immunogen

Recombinant protein (or fragment). This information is considered to be commercially sensitive.

Synonyms

Contact

☎ | 400-999-6126

✉ | cn.market@abclonal.com.cn

🌐 | www.abclonal.com.cn

Product Information

Source

Rabbit

Isotype

IgG

Purification

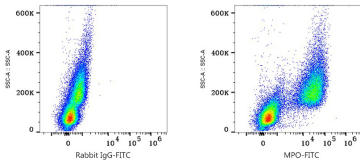
Affinity purification

Storage

Store at 2-8°C. Avoid freeze.

Buffer: PBS with 0.09% Sodium azide, 0.2% BSA, pH7.3.

Validation Data



Flow cytometry: 1×10^6 Human PBMC were intracellularly-stained with FITC Rabbit IgG isotype control (A25616,5 μ l/Test,left) or FITC Rabbit anti-Human MPO mAb (A28807,5 μ l/Test,right).