

FITC Rabbit anti-Human CD269/BCMA mAb

Catalog No.: A28803

Basic Information

Observed MW

Calculated MW

20kDa

Category

Primary antibody

Applications

FC

Cross-Reactivity

Human

CloneNo number

ARC81176

Conjugate

FITC. Ex:491nm. Em:516nm.

Recommended Dilutions

FC 5 μ l per 10^6 cells in
100 μ l volume

Background

B-cell maturation antigen (BCMA/TNFRSF17/CD269) is a transmembrane glycoprotein and a member of the TNFR superfamily. BCMA expression is mainly restricted to B-cell lineages. The activation signal transduction through this receptor regulates B-cell maturation and plasma cell differentiation upon binding to its ligands (BAFF and APRIL), thus playing a key role in humoral immunity. BCMA is expressed in many B-cell malignancies, and it is selectively expressed on the cell surface of malignant plasma cells with elevated expression. Therefore, BCMA has attracted much attention as a new therapeutic target for the treatment of multiple myeloma.

Immunogen Information

Gene ID

608

Swiss Prot

Q02223

Immunogen

Recombinant protein (or fragment). This information is considered to be commercially sensitive.

Synonyms

BCM; BCMA; CD269; TNFRSF13A

Contact

☎ | 400-999-6126

✉ | cn.market@abclonal.com.cn

🌐 | www.abclonal.com.cn

Product Information

Source

Rabbit

Isotype

IgG

Purification

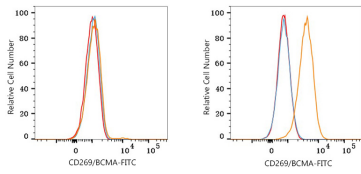
Affinity purification

Storage

Store at 2-8°C. Avoid freeze.

Buffer: PBS with 0.09% Sodium azide, 0.2% BSA, pH7.3.

Validation Data



Flow cytometry: 1×10^6 293T cells (negative control, left) and U266 cells (right) were surface-stained with FITC Rabbit anti-Human CD269/BCMA mAb (A28803, 5 μ l/Test, orange line) or FITC Rabbit IgG isotype control (A25616, 5 μ l/Test, blue line). Non-fluorescently stained cells were used as blank control (red line).