

PE Rabbit anti-Human/Mouse CD49f mAb

Catalog No.: A28768

Basic Information

Observed MW

Calculated MW
127kDa

Category
Primary antibody

Applications
FC

Cross-Reactivity
Human, Mouse

CloneNo number
ARC80878

Conjugate
PE. Ex:565nm. Em:574nm.

Background

Integrin $\alpha 6$ is a 120 kDa protein with two splicing isoforms, integrin $\alpha 6$, 6A and 6B. They function as receptors for laminin on the basement membrane, mediating cell adhesion activities. It has been confirmed that $\alpha 6$ integrin plays a significant role in the homing of hematopoietic stem and progenitor cells to the bone marrow.

Recommended Dilutions

FC 5 μ l per 10^6 cells in
100 μ l volume

Immunogen Information

Gene ID	Swiss Prot
3655	P23229

Immunogen

Recombinant protein (or fragment). This information is considered to be commercially sensitive.

Synonyms

CD49fA; ITGA6B; JEB6; VLA-6; ITGA6

Contact

	400-999-6126
	cn.market@abclonal.com.cn
	www.abclonal.com.cn

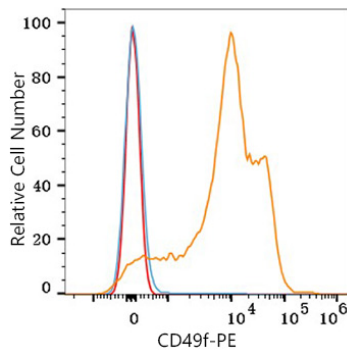
Product Information

Source	Isotype	Purification
Rabbit	IgG	Affinity purification

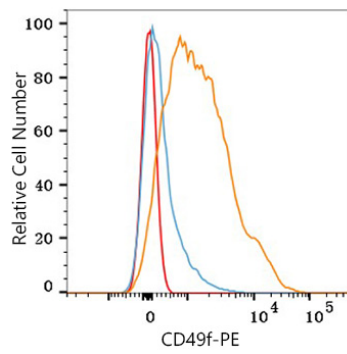
Storage

Store at 2-8°C. Avoid freeze.
Buffer: PBS with 0.09% Sodium azide, 0.2% BSA, pH7.3.

Validation Data



Flow cytometry: 1×10^6 Human PBMC were surface-stained with PE Rabbit anti-Human/Mouse CD49f mAb (A28768, 5 μ l/Test, orange line) or PE Rabbit IgG isotype control (A24172, 5 μ l/Test, blue line). Non-fluorescently stained cells were used as blank control (red line).



Flow cytometry: 1×10^6 C57BL/6 mouse splenocytes were surface-stained with PE Rabbit anti-Human/Mouse CD49f mAb (A28768, 5 μ l/Test, orange line) or PE Rabbit IgG isotype control (A24172, 5 μ l/Test, blue line). Non-fluorescently stained cells were used as blank control (red line).