

Anti-Monkey CD3 mAb

Catalog No.: A28764

Basic Information

Observed MW

Calculated MW

23 kDa

Category

Primary antibody

Applications

IHC-P, mIHC

Cross-Reactivity

Cynomolgus monkey

CloneNo number

ARC5369-01

Background

The protein encoded by this gene is the CD3-epsilon polypeptide, which together with CD3-gamma, -delta and -zeta, and the T-cell receptor alpha/beta and gamma/delta heterodimers, forms the T-cell receptor-CD3 complex. This complex plays an important role in coupling antigen recognition to several intracellular signal-transduction pathways. The genes encoding the epsilon, gamma and delta polypeptides are located in the same cluster on chromosome 11. The epsilon polypeptide plays an essential role in T-cell development. Defects in this gene cause immunodeficiency. This gene has also been linked to a susceptibility to type I diabetes in women.

Recommended Dilutions

IHC-P 1:500 - 1:2000

mIHC 1:500 - 1:2000

Immunogen Information

Gene ID

102133065

Swiss Prot

Q95LI5

Immunogen

Recombinant protein (or fragment). This information is considered to be commercially sensitive.

Synonyms

T3E; TCRE; IMD18; CD3epsilon

Contact

☎ | 400-999-6126

✉ | cn.market@abclonal.com.cn

🌐 | www.abclonal.com.cn

Product Information

Source

Rabbit

Isotype

IgG

Purification

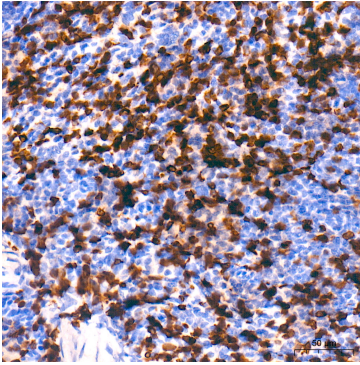
Affinity purification

Storage

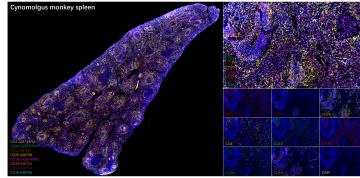
Store at -20°C. Avoid freeze / thaw cycles.

Buffer: PBS with 0.09% Sodium azide, 0.05% BSA, 50% glycerol, pH7.3.

Validation Data



Immunohistochemistry analysis of paraffin-embedded Cynomolgus monkey spleen tissue using Anti-Monkey CD3 mAb (A28764) at a dilution of 1:500 (40x lens). High pressure antigen retrieval performed with 0.01M Tris-EDTA Buffer (pH 9.0) prior to IHC staining.



The multiplex IHC analysis on paraffin-embedded Cynomolgus monkey spleen tissue using the following specific primary antibodies and tyramide signal amplification (TSA) reagents (RK05903) : Anti-Monkey CD4 PolymAb® (A28749PM, 1:400) with TSA-CFP440 (Light Brown), and Anti-Monkey CD8A Rabbit PolymAb® (A28747PM, 1:1000) with TSA-CFP490 (Green), and Anti-Monkey CD3 mAb (A28764, 1:1000) with TSA-CFP555 (Red), and Anti-Monkey CD20 mAb (A28759, 1:1000) with TSA-CFP645 (Yellow), and Anti-Monkey CD163 PolymAb® (A28748PM, 1:20000) with TSA-CFP440 (Magenta), and Anti-Monkey CD19 mAb (A28753, 1:400) with TSA-CFP490 (Orange), and Anti-Monkey CD14 mAb (A28754, 1:200) with TSA-CFP555 (Magenta), and Anti-Monkey CD16 mAb (A28756, 1:5000) with TSA-CFP649 (Cyan). DAPI (Blue) was used for nuclear staining. Prior to multiplex IHC staining, high-pressure antigen retrieval was performed using 0.01M citrate buffer at pH 6.0. The analysis was completed using a 40x objective lens.