

# [KO Validated] Mouse TMEM192 Rabbit mAb MJFF-G-20H2

Catalog No.: A28709 **KO** **Validated** **Recombinant**

## Basic Information

### Observed MW

30 kDa

### Calculated MW

30 kDa/25 kDa

### Category

Primary antibody

### Applications

IP

### Cross-Reactivity

Mouse

### CloneNo number

ARC5177

## Background

Predicted to enable protein homodimerization activity. Located in lysosome. Orthologous to human TMEM192 (transmembrane protein 192).

## Recommended Dilutions

**IP** 0.5 µg - 4 µg antibody for  
200 µg - 400 µg extracts  
of whole cells

## Immunogen Information

### Gene ID

73067

### Swiss Prot

Q9CXT7

### Immunogen

Synthetic peptide. This information is considered to be commercially sensitive.

### Synonyms

3110005G23Rik

## Contact

 | 400-999-6126

 | [cn.market@abclonal.com.cn](mailto:cn.market@abclonal.com.cn)

 | [www.abclonal.com.cn](http://www.abclonal.com.cn)

## Product Information

### Source

Rabbit

### Isotype

IgG

### Purification

Affinity purification

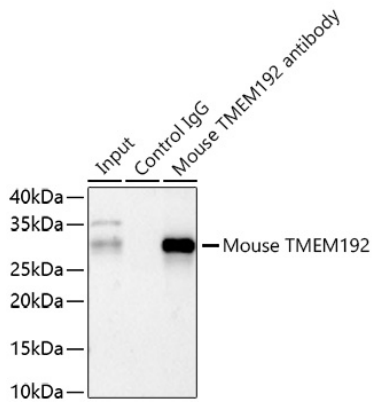
### Storage

Store at -20°C. Avoid freeze / thaw cycles.

Buffer: PBS with 0.09% sodium azide, 0.05% BSA, 50% glycerol, negative IgG, pH7.3

## Validation Data

---



Immunoprecipitation of Mouse TMEM192 from 300  $\mu$ g extracts of MEF cells was performed using 1  $\mu$ g of [KO Validated] Mouse TMEM192 Rabbit mAb MJFF-G-20H2 (A28709). Rabbit Control IgG (AC005) was used to precipitate the Control IgG sample. IP samples were eluted with 1x Laemmli Buffer. The Input lane represents 10% of the total input. Western blot analysis of immunoprecipitates was conducted using [KO Validated] Mouse TMEM192 Rabbit mAb MJFF-G-20H2 (A28709) at a dilution of 1:1000.