

# APC Rabbit anti-Mouse CD3ε mAb

Catalog No.: A28702

## Basic Information

### Observed MW

### Calculated MW

### Category

Primary antibody

### Applications

FC

### Cross-Reactivity

Mouse

### CloneNo number

ARC80921

### Conjugate

APC. Ex:650nm. Em:660nm.

## Background

CD3ε is a 20 kD transmembrane protein, also known as CD3 or T3. It is a member of the Ig superfamily, mainly expressed on T cells and NK-T cells, and expressed at different levels on thymocytes during the process of T cell differentiation. CD3ε forms TCR complexes by binding to CD3δ, γ and δ chains as well as TCR α/β or γ/δ chains. CD3 plays a key role in TCR signal transduction, T cell activation and antigen recognition by binding to peptide /MHC antigen complexes.

## Recommended Dilutions

FC ≤0.25 μg per million cells  
in 100 μl volume

## Immunogen Information

### Gene ID

12501

### Swiss Prot

P22646

### Immunogen

Recombinant protein (or fragment). This information is considered to be commercially sensitive.

### Synonyms

CD3;CD3epsilon;T3e

## Contact

☎ | 400-999-6126

✉ | [cn.market@abclonal.com.cn](mailto:cn.market@abclonal.com.cn)

🌐 | [www.abclonal.com.cn](http://www.abclonal.com.cn)

## Product Information

### Source

Rabbit

### Isotype

IgG

### Purification

Affinity purification

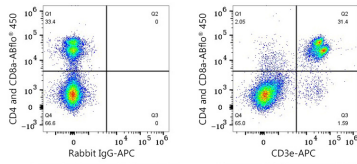
### Storage

Store at 2-8°C. Avoid freeze.

Buffer: PBS with 0.09% Sodium azide, 0.2% BSA, pH7.3.

## Validation Data

---



Flow cytometry:  $1 \times 10^6$  C57BL/6 mouse splenocytes were surface-stained with ABflo® 450 Rabbit anti-Mouse CD4 mAb (A25941,5  $\mu\text{l}/\text{Test}$ ), ABflo® 450 Rabbit anti-Mouse CD8a mAb (A25943,5  $\mu\text{l}/\text{Test}$ ) and APC Rabbit IgG isotype control (A24173,5  $\mu\text{l}/\text{Test}$ ,left) or APC Rabbit anti-Mouse CD3e mAb (A28702,5  $\mu\text{l}/\text{Test}$ ,right).