

PADI4 Rabbit mAb

Catalog No.: A28693 **Recombinant**

Basic Information

Observed MW

74 kDa

Calculated MW

74 kDa

Category

Primary antibody

Applications

WB,IF/ICC,IF-F,IHC-P,ELISA

Cross-Reactivity

Human, Mouse, Rat

CloneNo number

ARC79653

Background

This gene is a member of a gene family which encodes enzymes responsible for the conversion of arginine residues to citrulline residues. This gene may play a role in granulocyte and macrophage development leading to inflammation and immune response.

Recommended Dilutions

WB	1:2000 - 1:5000
IF/ICC	1:400 - 1:1000
IF-F	1:400 - 1:1000
IHC-P	1:1000 - 1:4000
ELISA	Recommended starting concentration is 1 µg/mL. Please optimize the concentration based on your specific assay requirements. For high-ratio antibody dilutions ($\geq 1:10000$) a sequential dilution method is strongly recommended to ensure measurement accuracy.

Immunogen Information

Gene ID

23569

Swiss Prot

Q9UM07

Immunogen

Synthetic peptide. This information is considered to be commercially sensitive.

Synonyms

PAD; PAD4; PDI4; PDI5; PADI5

Product Information

Source

Rabbit

Isotype

IgG

Purification

Affinity purification

Storage

Store at -20°C. Avoid freeze / thaw cycles.

Buffer: PBS with 0.09% Sodium azide, 0.05% BSA, 50% glycerol, pH7.3.

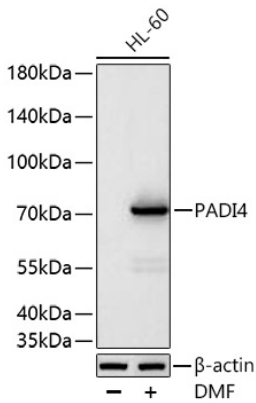
Contact

 | 400-999-6126

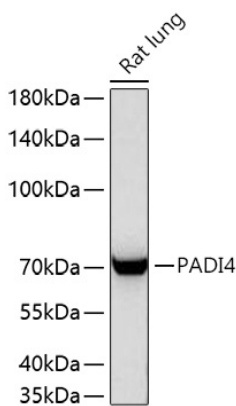
 | cn.market@abclonal.com.cn

 | www.abclonal.com.cn

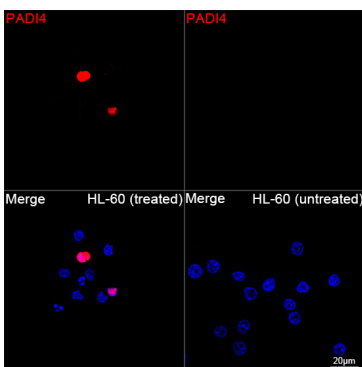
Validation Data



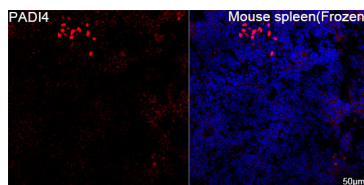
Western blot analysis of lysates from HL-60 cells using PADI4 Rabbit mAb (A28693) at 1:5000 dilution incubated overnight at 4°C. HL-60 cells were treated with DMF(60 mM) at 37°C for 6 days. Secondary antibody: HRP-conjugated Goat anti-Rabbit IgG (H+L) (AS014) at 1:10000 dilution. Lysates/proteins: 30 µg per lane. Blocking buffer: 3% nonfat dry milk in TBST. Detection: ECL Basic Kit (RM00020). Exposure time: 45 s.



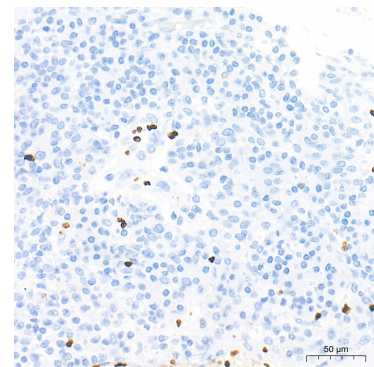
Western blot analysis of lysates from Rat lung using PADI4 Rabbit mAb (A28693) at 1:5000 dilution incubated overnight at 4°C. Secondary antibody: HRP-conjugated Goat anti-Rabbit IgG (H+L) (AS014) at 1:10000 dilution. Lysates/proteins: 25 µg per lane. Blocking buffer: 3% nonfat dry milk in TBST. Detection: ECL Basic Kit (RM00020). Exposure time: 45 s.



Confocal imaging of HL-60 cells (treated with DMF) and HL-60 cells (untreated) using PADI4 Rabbit mAb (A28693, dilution 1:900) followed by a further incubation with Cy3-conjugated Goat anti-Rabbit IgG (H+L) (AS007, dilution 1:500) (Red). DAPI was used for nuclear staining (Blue). Objective: 100x.

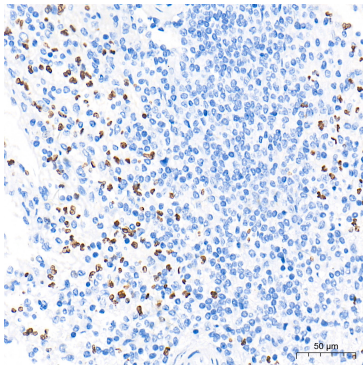


Confocal imaging of frozen sections of Mouse spleen tissue using PADI4 Rabbit mAb (A28693, dilution 1:900) followed by a further incubation with Cy3-conjugated Goat anti-Rabbit IgG (H+L) (AS007, dilution 1:500) (Red). DAPI was used for nuclear staining (Blue). Microwave antigen retrieval performed with 0.01M Citrate Buffer (pH 6.0) prior to IF staining. Objective: 40x.

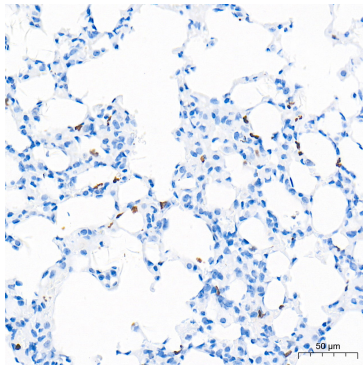


Immunohistochemistry analysis of paraffin-embedded Human tonsil tissue using PADI4 Rabbit mAb (A28693) at a dilution of 1:2000 (40x lens). High pressure antigen retrieval performed with 0.01M Tris-EDTA Buffer (pH 9.0) prior to IHC staining.

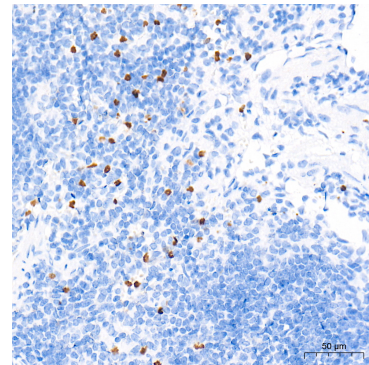
Validation Data



Immunohistochemistry analysis of paraffin-embedded Human spleen tissue using PADI4 Rabbit mAb (A28693) at a dilution of 1:2000 (40x lens). High pressure antigen retrieval performed with 0.01M Tris-EDTA Buffer (pH 9.0) prior to IHC staining.



Immunohistochemistry analysis of paraffin-embedded Mouse lung tissue using PADI4 Rabbit mAb (A28693) at a dilution of 1:2000 (40x lens). High pressure antigen retrieval performed with 0.01M Tris-EDTA Buffer (pH 9.0) prior to IHC staining.



Immunohistochemistry analysis of paraffin-embedded Mouse spleen tissue using PADI4 Rabbit mAb (A28693) at a dilution of 1:2000 (40x lens). High pressure antigen retrieval performed with 0.01M Tris-EDTA Buffer (pH 9.0) prior to IHC staining.