

# [KO Validated] Mitofusin-1/MFN1 Rabbit mAb

Catalog No.: A28662 **KO** **Validated** **Recombinant**

## Basic Information

### Observed MW

82 kDa

### Calculated MW

42 kDa/71 kDa/84 kDa

### Category

Primary antibody

### Applications

WB,IF/ICC,ELISA

### Cross-Reactivity

Human, Mouse, Rat

### CloneNo number

ARC80808

## Background

The protein encoded by this gene is a mediator of mitochondrial fusion. This protein and mitofusin 2 are homologs of the Drosophila protein fuzzy onion (Fzo). They are mitochondrial membrane proteins that interact with each other to facilitate mitochondrial targeting.

## Recommended Dilutions

**WB** 1:3000 -1:10000

**IF/ICC** 1:100-1:200

**ELISA** Recommended starting concentration is 1 µg/mL. Please optimize the concentration based on your specific assay requirements. For high-ratio antibody dilutions ( $\geq 1:10000$ ) a sequential dilution method is strongly recommended to ensure measurement accuracy.

## Immunogen Information

### Gene ID

55669

### Swiss Prot

Q8IWA4

### Immunogen

Synthetic peptide. This information is considered to be commercially sensitive.

### Synonyms

hfzo1; hfzo2; Mitofusin-1/MFN1

## Product Information

### Source

Rabbit

### Isotype

IgG

### Purification

Affinity purification

### Storage

Store at -20°C. Avoid freeze / thaw cycles.

Buffer: PBS with 0.09% sodium azide, 0.05% BSA, 50% glycerol, pH7.3.

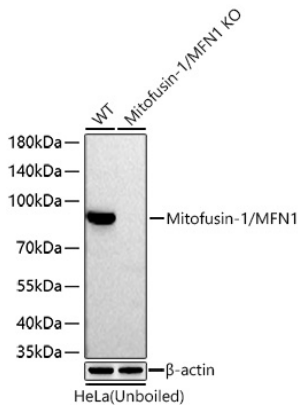
## Contact

☎ | 400-999-6126

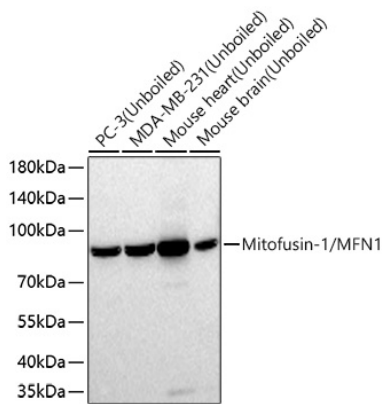
✉ | [cn.market@abclonal.com.cn](mailto:cn.market@abclonal.com.cn)

🌐 | [www.abclonal.com.cn](http://www.abclonal.com.cn)

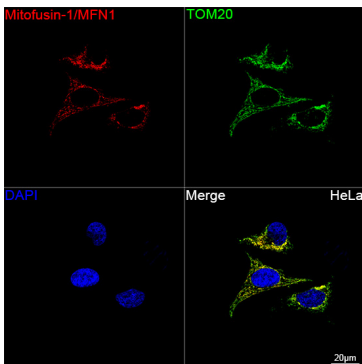
## Validation Data



Western blot analysis of lysates from wild type (WT) and Mitofusin-1/MFN1 knockout (KO) HeLa cells using [KO Validated] Mitofusin-1/MFN1 Rabbit mAb (A28662) at 1:5000 dilution incubated overnight at 4°C. Secondary antibody: HRP-conjugated Goat anti-Rabbit IgG (H+L) (AS014) at 1:10000 dilution. Lysates/proteins: 25 µg per lane. Blocking buffer: 3% nonfat dry milk in TBST. Detection: ECL Basic Kit (RM00020). Exposure time: 90 s.



Western blot analysis of various lysates using [KO Validated] Mitofusin-1/MFN1 Rabbit mAb (A28662) at 1:5000 dilution incubated overnight at 4°C. Secondary antibody: HRP-conjugated Goat anti-Rabbit IgG (H+L) (AS014) at 1:10000 dilution. Lysates/proteins: 25 µg per lane. Blocking buffer: 3% nonfat dry milk in TBST. Detection: ECL Basic Kit (RM00020). Exposure time: 90 s.



Confocal imaging of HeLa cells using [KO Validated] Mitofusin-1/MFN1 Rabbit mAb (A28662, dilution 1:200) followed by a further incubation with Cy3-conjugated Goat anti-Rabbit IgG (H+L) (AS007, dilution 1:500) (Red). The cells were counterstained with TOM20 Mouse mAb (A27799, dilution 1:200) followed by incubation with ABflo® 488-conjugated Goat Anti-Mouse IgG (H+L) Ab (AS076, dilution 1:500) (Green). DAPI was used for nuclear staining (Blue). Objective: 100x.