

FITC Rabbit anti-Human CD103/Integrin α E mAb

Catalog No.: A28660

Basic Information

Observed MW

Calculated MW

130 kDa

Category

Primary antibody

Applications

FC

Cross-Reactivity

Human

CloneNo number

ARC81090

Conjugate

FITC. Ex:491nm. Em:516nm.

Recommended Dilutions

FC 5 μ l per 10^6 cells in
100 μ l volume

Background

Integrins are heterodimeric integral membrane proteins composed of an alpha chain and a beta chain. This gene encodes an I-domain-containing alpha integrin that undergoes post-translational cleavage in the extracellular domain, yielding disulfide-linked heavy and light chains. In combination with the beta 7 integrin, this protein forms the E-cadherin binding integrin known as the human mucosal lymphocyte-1 antigen. This protein is preferentially expressed in human intestinal intraepithelial lymphocytes (IEL), and in addition to a role in adhesion, it may serve as an accessory molecule for IEL activation.

Immunogen Information

Gene ID

3682

Swiss Prot

P38570

Immunogen

Recombinant protein (or fragment). This information is considered to be commercially sensitive.

Synonyms

CD103; HUMINAE

Contact

☎ | 400-999-6126

✉ | cn.market@abclonal.com.cn

🌐 | www.abclonal.com.cn

Product Information

Source

Rabbit

Isotype

IgG

Purification

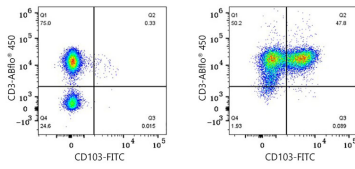
Affinity purification

Storage

Store at 2-8°C. Avoid freeze.

Buffer: PBS with 0.09% Sodium azide, 0.2% BSA, pH7.3.

Validation Data



Flow cytometry: 1×10^6 Human PBMC (untreated, left) and Human PBMC (treated with 5 ug/ml PMA for 3 days, right) were surface-stained with ABflo® 450 Rabbit anti-Human/Monkey CD3 mAb (A27177, 5 μ l/Test) or FITC Rabbit anti-Human CD103/Integrin α E mAb (A28660, 5 μ l/Test). Cells in the lymphocyte gate were used for analysis.