

TMEM192 Rabbit mAb

Catalog No.: A28622 **Recombinant**

Basic Information

Observed MW

31 kDa

Calculated MW

31 kDa

Category

Primary antibody

Applications

WB,IP,ELISA

Cross-Reactivity

Human

CloneNo number

ARC5176

Background

Enables protein homodimerization activity. Located in several cellular components, including late endosome; lysosomal membrane; and perinuclear region of cytoplasm.

Recommended Dilutions

WB 1:1000 - 1:4000

IP 0.5 µg - 4 µg antibody for
400 µg - 600 µg extracts
of whole cells

ELISA Recommended starting
concentration is 1 µg/mL.
Please optimize the
concentration based on
your specific assay
requirements. For high-
ratio antibody dilutions
(≥1:10000) a sequential
dilution method is
strongly recommended
to ensure measurement
accuracy.

Immunogen Information

Gene ID

201931

Swiss Prot

Q8IY95

Immunogen

Synthetic peptide. This information is considered to be commercially sensitive.

Synonyms

TMEM192

Product Information

Source

Rabbit

Isotype

IgG

Purification

Affinity purification

Storage

Store at -20°C. Avoid freeze / thaw cycles.

Buffer: PBS with 0.09% sodium azide, 0.05% BSA, 50% glycerol, negative IgG, pH7.3

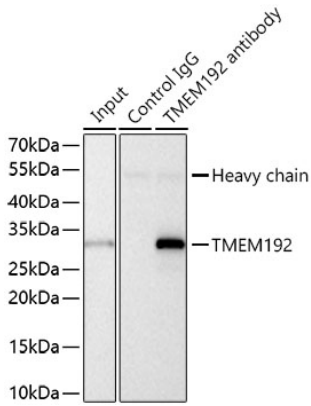
Contact

 | 400-999-6126

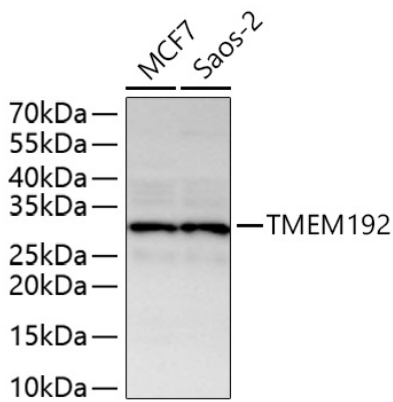
 | cn.market@abclonal.com.cn

 | www.abclonal.com.cn

Validation Data



Immunoprecipitation of TMEM192 from 600 μ g extracts of Saos-2 cells was performed using 2 μ g of TMEM192 Rabbit mAb (A28622). Rabbit Control IgG (AC005) was used to precipitate the Control IgG sample. IP samples were eluted with 1x Laemmli Buffer. The Input lane represents 10% of the total input. Western blot analysis of immunoprecipitates was conducted using TMEM192 Rabbit mAb (A28622) at a dilution of 1:2000.



Western blot analysis of various lysates using TMEM192 Rabbit mAb (A28622) at 1:4000 dilution incubated overnight at 4°C.
Secondary antibody: HRP-conjugated Goat anti-Rabbit IgG (H+L) (AS014) at 1:10000 dilution.
Lysates/proteins: 25 μ g per lane.
Blocking buffer: 3% nonfat dry milk in TBST.
Detection: ECL Basic Kit (RM00020).
Exposure time: 90 s.