

PE Rabbit anti-Monkey CD22 mAb

Catalog No.: A28610

Basic Information

Observed MW

Calculated MW

95 kDa

Category

Primary antibody

Applications

FC

Cross-Reactivity

Cynomolgus

CloneNo number

ARC59246

Conjugate

PE. Ex:565nm. Em:574nm.

Background

CD22 is a 130 kDa type I transmembrane glycoprotein, also known as Siglec-2 and BL-CAM. It is a member of the immunoglobulin superfamily (sialoadhesin subgroup). CD22 is expressed in the cytoplasm of pro-B and pre-B cells, and on the surface of mature and activated B cells, but is absent on plasma cells. It is part of the B-cell receptor (BCR) complex and associates with signaling molecules such as SHP-1, Syk, Lck, Lyn, and phospholipase C γ 1. The primary function of CD22 is believed to be the limitation of antigen receptor signaling by modulating the threshold for B-cell activation. Studies have shown that CD22 can bind to CD45RO and CD75, although the identity of its natural ligand(s) remains a subject of debate.

Recommended Dilutions

FC 5 μ l per 10^6 cells in
100 μ l volume

Immunogen Information

Gene ID

933

Swiss Prot

P20273

Immunogen

Recombinant protein (or fragment). This information is considered to be commercially sensitive.

Synonyms

SIGLEC2; SIGLEC-2

Contact

☎ | 400-999-6126

✉ | cn.market@abclonal.com.cn

🌐 | www.abclonal.com.cn

Product Information

Source

Rabbit

Isotype

IgG

Purification

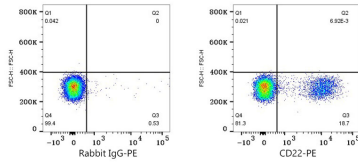
Affinity purification

Storage

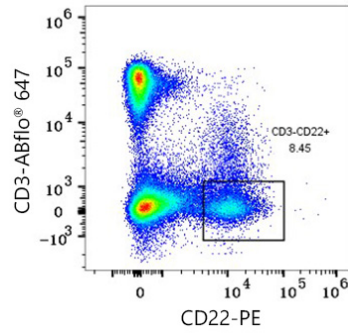
Store at 2-8°C. Avoid freeze.

Buffer: PBS with 0.09% Sodium azide, 0.2% BSA, pH7.3.

Validation Data



Flow cytometry: 1×10^6 Cynomolgus PBMC were surface-stained with PE Rabbit IgG isotype control (A24172, 5 $\mu\text{l}/\text{Test}$, left) or PE Rabbit anti-Monkey CD22 mAb (A28610, 5 $\mu\text{l}/\text{Test}$, right). Cells in the lymphocyte gate were used for analysis.



Flow cytometry: 1×10^6 Cynomolgus peripheral blood mononuclear cells were surface-stained with ABflo® 450 Rabbit anti-Human/Monkey CD45 mAb (A25195, 5 $\mu\text{l}/\text{Test}$), ABflo® 647 Rabbit anti-Human/Monkey CD3 mAb (26284, 5 $\mu\text{l}/\text{Test}$) and PE Rabbit anti-Monkey CD22 mAb (A28610, 5 $\mu\text{l}/\text{Test}$). Cells in the CD45+ gate were used for analysis.