

SGLT1 Rabbit mAb

Catalog No.: A28576 **Recombinant**

Basic Information

Observed MW

73 kDa

Calculated MW

73 kDa

Category

Primary antibody

Applications

WB,IF-P,IHC-P,ELISA

Cross-Reactivity

Mouse

CloneNo number

ARC79769

Background

Enables D-glucose:sodium symporter activity. Involved in intestinal D-glucose absorption; regulation of transporter activity; and renal D-glucose absorption. Acts upstream of or within D-glucose transmembrane transport; intestinal absorption; and metanephros development. Located in apical plasma membrane and brush border. Is expressed in alimentary system; brain; and urinary system. Human ortholog(s) of this gene implicated in glucose-galactose malabsorption. Orthologous to human SLC5A1 (solute carrier family 5 member 1).

Recommended Dilutions

WB 1:3000 -1:10000**IF-P** 1:200 - 1:1000**IHC-P** 1:2000 - 1:8000

ELISA Recommended starting concentration is 1 µg/mL. Please optimize the concentration based on your specific assay requirements. For high-ratio antibody dilutions ($\geq 1:10000$) a sequential dilution method is strongly recommended to ensure measurement accuracy.

Immunogen Information

Gene ID

20537

Swiss Prot

Q8C3K6

Immunogen

Recombinant protein (or fragment). This information is considered to be commercially sensitive.

Synonyms

SglT1

Product Information

Source

Rabbit

Isotype

IgG

Purification

Affinity purification

Storage

Store at -20°C. Avoid freeze / thaw cycles.

Buffer: PBS with 0.09% sodium azide, 0.05% BSA, 50% glycerol, pH7.3.

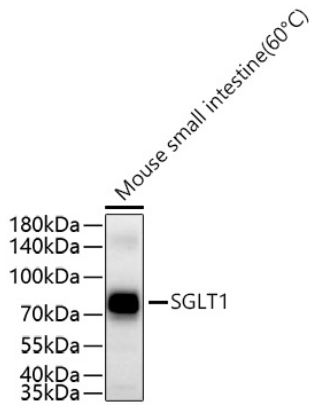
Contact

 | 400-999-6126

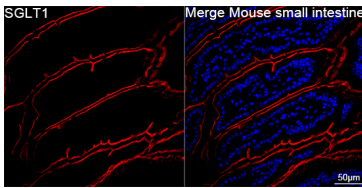
 | cn.market@abclonal.com.cn

 | www.abclonal.com.cn

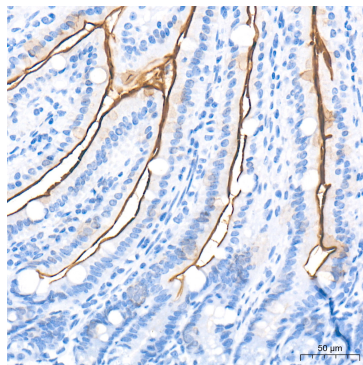
Validation Data



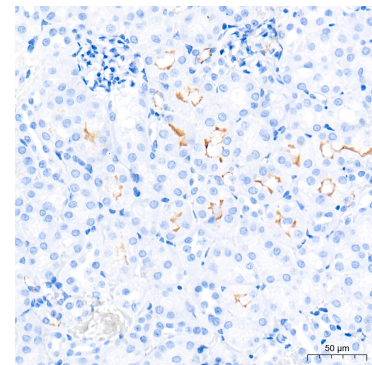
Western blot analysis of lysates from Mouse small intestine using SGLT1 Rabbit mAb (A28576) at 1:5000 dilution incubated overnight at 4°C.
Secondary antibody: HRP-conjugated Goat anti-Rabbit IgG (H+L) (AS014) at 1:10000 dilution.
Lysates/proteins: 25 µg per lane.
Blocking buffer: 3% nonfat dry milk in TBST.
Detection: ECL Basic Kit (RM00020).
Exposure time: 10 s.



Confocal imaging of paraffin-embedded Mouse small intestine tissue using SGLT1 Rabbit mAb (A28576, dilution 1:200) followed by a further incubation with Cy3-conjugated Goat anti-Rabbit IgG (H+L) (AS007, dilution 1:500) (Red). DAPI was used for nuclear staining (Blue). High pressure antigen retrieval performed with 0.01M Citrate Buffer (pH 6.0) prior to IF staining. Objective: 40x.



Immunohistochemistry analysis of paraffin-embedded Mouse intestine tissue using SGLT1 Rabbit mAb (A28576) at a dilution of 1:5000 (40x lens). High pressure antigen retrieval performed with 0.01M Tris-EDTA Buffer (pH 9.0) prior to IHC staining.



Immunohistochemistry analysis of paraffin-embedded Mouse kidney tissue using SGLT1 Rabbit mAb (A28576) at a dilution of 1:5000 (40x lens). High pressure antigen retrieval performed with 0.01M Tris-EDTA Buffer (pH 9.0) prior to IHC staining.