

# CD44 Rabbit PolymAb®

**Catalog No.: A28567PM**

## Basic Information

**Observed MW**

80-95 kDa

**Calculated MW**

40-86 kDa

**Category**

Primary antibody

**Applications**

WB, IF/ICC, IHC-P, ELISA

**Cross-Reactivity**

Human, Mouse, Rat

## Background

Enables cargo receptor activity; hyaluronic acid binding activity; and type II transforming growth factor beta receptor binding activity. Contributes to cytokine binding activity and cytokine receptor activity. Involved in several processes, including hyaluronan catabolic process; negative regulation of T cell activation; and regulation of intracellular signal transduction. Acts upstream of or within several processes, including Wnt signaling pathway; morphogenesis of a branching epithelium; and wound healing involved in inflammatory response. Located in basolateral plasma membrane; external side of plasma membrane; and microvillus. Part of macrophage migration inhibitory factor receptor complex. Is expressed in several structures, including alimentary system; branchial arch; central nervous system; genitourinary system; and limb. Human ortholog(s) of this gene implicated in breast carcinoma (multiple); carcinoma (multiple); and prostate cancer. Orthologous to human CD44 (CD44 molecule (IN blood group)).

## Recommended Dilutions

**WB** 1:3000 - 1:10000**IF/ICC** 1:200 - 1:800**IHC-P** 1:5000 - 1:20000

**ELISA** Recommended starting concentration is 1 µg/mL. Please optimize the concentration based on your specific assay requirements. For high-ratio antibody dilutions (≥1:10000) a sequential dilution method is strongly recommended to ensure measurement accuracy.

## Immunogen Information

**Gene ID**

12505

**Swiss Prot**

P15379

**Immunogen**

Recombinant protein (or fragment). This information is considered to be commercially sensitive.

**Synonyms**

Ly-24; Pgp-1; HERMES

## Product Information

**Source**

Rabbit

**Isotype**

IgG

**Purification**

Affinity purification

**Storage**

Store at -20°C. Avoid freeze / thaw cycles.

Buffer: PBS with 0.09% Sodium azide, 0.05% BSA, 50% glycerol, pH7.3

Contact

---

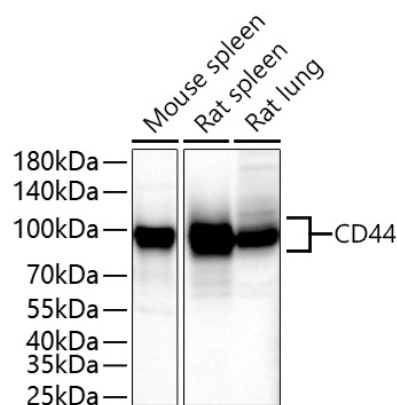
☎ | 400-999-6126

✉ | [cn.market@abclonal.com.cn](mailto:cn.market@abclonal.com.cn)

🌐 | [www.abclonal.com.cn](http://www.abclonal.com.cn)

---

## Validation Data



Western blot analysis of various lysates using CD44 Rabbit PolymAb® (A28567PM) at 1:5000 dilution incubated overnight at 4°C.

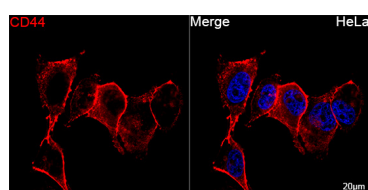
Secondary antibody: HRP-conjugated Goat anti-Rabbit IgG (H+L) (AS014) at 1:10000 dilution.

Lysates/proteins: 25 µg per lane.

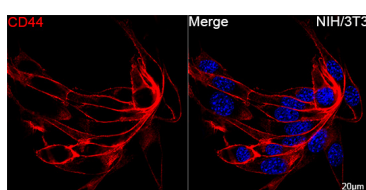
Blocking buffer: 3% nonfat dry milk in TBST.

Detection: ECL Basic Kit (RM00020).

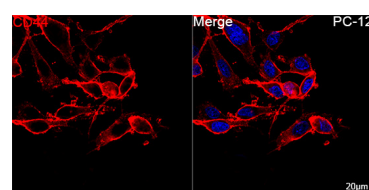
Exposure time: 10 s.



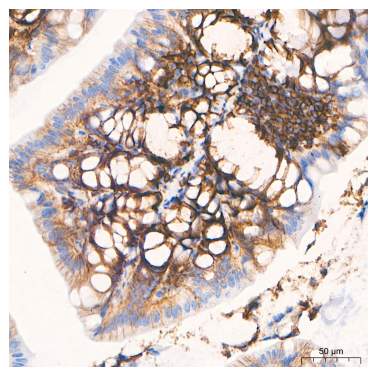
Confocal imaging of HeLa cells using CD44 Rabbit PolymAb® (A28567PM, dilution 1:200) followed by a further incubation with Cy3-conjugated Goat anti-Rabbit IgG (H+L) (AS007, dilution 1:500) (Red). DAPI was used for nuclear staining (Blue). Objective: 100x.



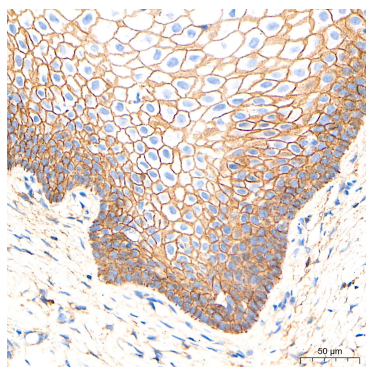
Confocal imaging of NIH/3T3 cells using CD44 Rabbit PolymAb® (A28567PM, dilution 1:200) followed by a further incubation with Cy3-conjugated Goat anti-Rabbit IgG (H+L) (AS007, dilution 1:500) (Red). DAPI was used for nuclear staining (Blue). Objective: 100x.



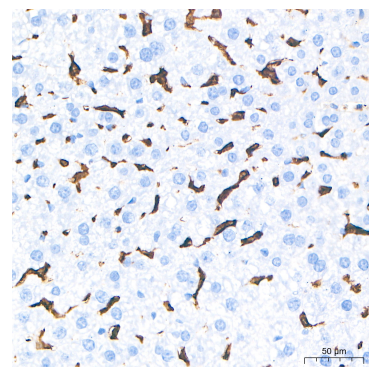
Confocal imaging of PC-12 cells using CD44 Rabbit PolymAb® (A28567PM, dilution 1:200) followed by a further incubation with Cy3-conjugated Goat anti-Rabbit IgG (H+L) (AS007, dilution 1:500) (Red). DAPI was used for nuclear staining (Blue). Objective: 100x.



Immunohistochemistry analysis of paraffin-embedded Mouse intestine tissue using CD44 Rabbit PolymAb® (A28567PM) at a dilution of 1:10000 (40x lens). High pressure antigen retrieval performed with 0.01M Tris-EDTA Buffer (pH 9.0) prior to IHC staining.



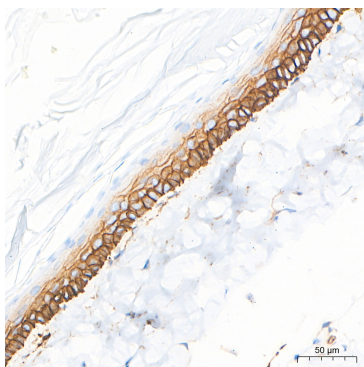
Immunohistochemistry analysis of paraffin-embedded Human esophagus tissue using CD44 Rabbit PolymAb® (A28567PM) at a dilution of 1:10000 (40x lens). High pressure antigen retrieval performed with 0.01M Tris-EDTA Buffer (pH 9.0) prior to IHC staining.



Immunohistochemistry analysis of paraffin-embedded Mouse liver tissue using CD44 Rabbit PolymAb® (A28567PM) at a dilution of 1:10000 (40x lens). High pressure antigen retrieval performed with 0.01M Tris-EDTA Buffer (pH 9.0) prior to IHC staining.

## Validation Data

---



Immunohistochemistry analysis of paraffin-embedded Rat skin tissue using CD44 Rabbit PolymAb® (A28567PM) at a dilution of 1:10000 (40x lens). High pressure antigen retrieval performed with 0.01M Tris-EDTA Buffer (pH 9.0) prior to IHC staining.