

# FITC Rabbit anti-Rat CD45 mAb

Catalog No.: A28531

## Basic Information

### Observed MW

### Calculated MW

143 kDa

### Category

Primary antibody

### Applications

FC

### Cross-Reactivity

Rat

### CloneNo number

ARC77525

### Conjugate

FITC. Ex:491nm. Em:516nm.

## Background

CD45 is a 180-220 kDa protein, also known as the Leukocyte Common Antigen (LCA). It is a protein tyrosine phosphatase that exists in multiple isoforms generated by alternative splicing of exons within the extracellular domain and differential glycosylation. CD45 is expressed on all hematopoietic cells except erythrocytes and platelets; the expression of specific isoforms depends on cell type, activation status, and maturation stage. It is essential for signal transduction through the T-cell and B-cell antigen receptors. CD45 has been shown to interact with various proteins, including galectin-1, CD2, CD3, and CD4. The OX-1 antibody has been demonstrated to partially inhibit NK cell-mediated lysis of syngeneic tumor cells in vitro.

## Recommended Dilutions

FC ≤0.5 µg per million cells  
in 100 µl volume

## Immunogen Information

### Gene ID

24699

### Swiss Prot

P04157

### Immunogen

Recombinant protein (or fragment). This information is considered to be commercially sensitive.

### Synonyms

Lca; RT7; CD45; L-CA; T200

## Contact

☎ | 400-999-6126

✉ | [cn.market@abclonal.com.cn](mailto:cn.market@abclonal.com.cn)

🌐 | [www.abclonal.com.cn](http://www.abclonal.com.cn)

## Product Information

### Source

Rabbit

### Isotype

IgG

### Purification

Affinity purification

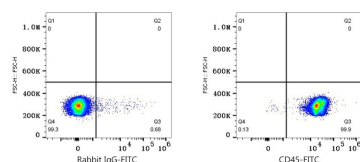
### Storage

Store at 2-8°C. Avoid freeze.

Buffer: PBS with 0.09% Sodium azide, 0.2% BSA, pH7.3.

## Validation Data

---



Flow cytometry: 1X10<sup>6</sup> Rat splenocytes were surface-stained with FITC Rabbit IgG isotype control (A25616, 5 µl/Test, left) or FITC Rabbit anti-Rat CD45 mAb (A28531, 0.5 µg, right).