

YKL-40/CHI3L1 Rabbit mAb

Catalog No.: A28527 **Recombinant**

Basic Information

Observed MW

40 kDa

Calculated MW

43 kDa/44 kDa

Category

Primary antibody

Applications

WB,IP,IHC-P,ELISA

Cross-Reactivity

Mouse

CloneNo number

ARC79279

Background

Predicted to enable chitin binding activity. Involved in positive regulation of macromolecule metabolic process and positive regulation of phosphatidylinositol 3-kinase/protein kinase B signal transduction. Located in endoplasmic reticulum. Is expressed in several structures, including alimentary system; genitourinary system; limb; liver; and skeleton. Human ortholog(s) of this gene implicated in asthma and schizophrenia. Orthologous to human CHI3L1 (chitinase 3 like 1).

Recommended Dilutions

WB 1:3000 - 1:10000

IP 0.5 µg-4 µg antibody for
400 µg-600 µg extracts
of whole cells

IHC-P 1:100 - 1:400

ELISA Recommended starting
concentration is 1 µg/mL.
Please optimize the
concentration based on
your specific assay
requirements. For high-
ratio antibody dilutions
(≥1:10000)a sequential
dilution method is
strongly recommended
to ensure measurement
accuracy.

Immunogen Information

Gene ID

12654

Swiss Prot

Q61362

Immunogen

Recombinant protein (or fragment). This information is considered to be commercially sensitive.

Synonyms

Gp39; Brp39; Chil1

Product Information

Source

Rabbit

Isotype

IgG

Purification

Affinity purification

Storage

Store at -20°C. Avoid freeze / thaw cycles.

Buffer: PBS with 0.09% Sodium azide,0.05% BSA,50% glycerol,pH7.3.

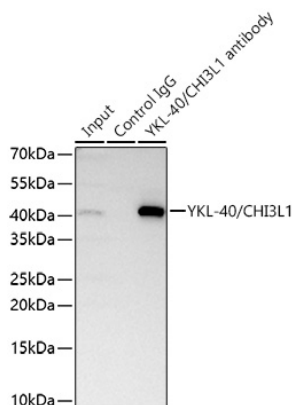
Contact

☎ | 400-999-6126

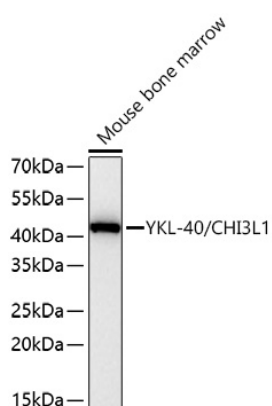
✉ | cn.market@abclonal.com.cn

🌐 | www.abclonal.com.cn

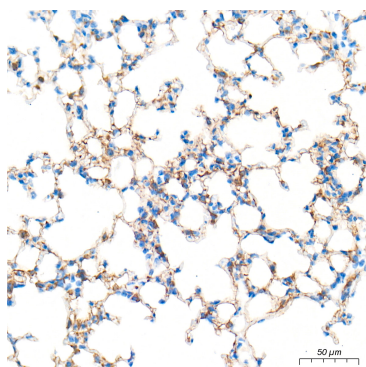
Validation Data



Immunoprecipitation of YKL-40/CHI3L1 from 600 µg extracts of Mouse lung tissue was performed using 2 µg of YKL-40/CHI3L1 Rabbit mAb (A28527). Rabbit Control IgG (AC005) was used to precipitate the Control IgG sample. IP samples were eluted with 1x Laemmli Buffer. The Input lane represents 10% of the total input. Western blot analysis of immunoprecipitates was conducted using YKL-40/CHI3L1 Rabbit mAb (A28527) at a dilution of 1:5000.



Western blot analysis of lysates from Mouse bone marrow using YKL-40/CHI3L1 Rabbit mAb (A28527) at 1:5000 dilution incubated overnight at 4°C. Secondary antibody: HRP-conjugated Goat anti-Rabbit IgG (H+L) (AS014) at 1:10000 dilution. Lysates/proteins: 25 µg per lane. Blocking buffer: 3% nonfat dry milk in TBST. Detection: ECL Basic Kit (RM00020). Exposure time: 45 s.



Immunohistochemistry analysis of paraffin-embedded Mouse lung tissue using YKL-40/CHI3L1 Rabbit mAb (A28527) at a dilution of 1:200 (40x lens). High pressure antigen retrieval performed with 0.01M Tris-EDTA Buffer (pH 9.0) prior to IHC staining.