

# ABflo® 647 Rabbit anti-Mouse Siglec5 mAb

Catalog No.: A28518

## Basic Information

### Observed MW

Refer to figures

### Calculated MW

61 kDa

### Category

Primary antibody

### Applications

FC

### Cross-Reactivity

Mouse

### CloneNo number

ARC69812

### Conjugate

ABflo® 647. Ex:648nm. Em:664nm.

## Recommended Dilutions

**FC** ≤0.5 µg per million cells  
in 100 µl volume

## Background

Enables monosaccharide binding activity and sialic acid binding activity. Involved in regulation of endocytosis. Located in lysosome. Orthologous to several human genes including SIGLEC5 (sialic acid binding Ig like lectin 5).

## Immunogen Information

### Gene ID

233186

### Swiss Prot

Q920G3

### Immunogen

Recombinant protein (or fragment). This information is considered to be commercially sensitive.


### Synonyms

Siglec5; mSiglec-F

## Contact

 | 400-999-6126

 | [cn.market@abclonal.com.cn](mailto:cn.market@abclonal.com.cn)

 | [www.abclonal.com.cn](http://www.abclonal.com.cn)

## Product Information

### Source

Rabbit

### Isotype

IgG

### Purification

Affinity purification

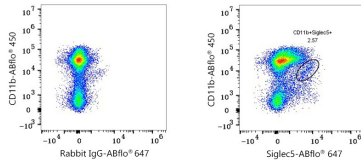
### Storage

Store at 2-8°C. Avoid freeze.

Buffer: PBS with 0.09% Sodium azide, 0.2% BSA, pH7.3.

## Validation Data

---



Flow cytometry: 1X10<sup>6</sup> C57BL/6 mouse bone marrow cells were surface-stained with ABflo® 450 Rabbit anti-Mouse CD11b mAb (A26229, 5 µl/Test) and ABflo® 647 Rabbit IgG isotype control (A22070, 5 µl/Test, left) or ABflo® 647 Rabbit anti-Mouse Siglec5 mAb (A28518, 0.5 µg, right).