

# SIRT1 Rabbit pAb

Catalog No.: A28514

## Basic Information

### Observed MW

120 kDa

### Calculated MW

80 kDa/60 kDa

### Category

Primary antibody

### Applications

WB, ELISA

### Cross-Reactivity

Mouse

## Background

This gene encodes a member of the sirtuin family of proteins, characterized by their deacetylase activity and proposed role in longevity. The encoded protein regulates gene expression in a wide range of cell and tissue types through its NAD<sup>+</sup>-dependent deacetylation of histones, transcription factors and transcriptional coactivators. Brain-specific overexpression of this gene has been shown to result in increased median lifespan. Viability of homozygous knockout mice for this gene varies with strain background. Homozygous knockout mice of strains that do not exhibit embryonic lethality are sterile and have a reduced lifespan. Alternative splicing results in multiple transcript variants.

## Recommended Dilutions

**WB** 1:1000 - 1:3000

**ELISA** Recommended starting concentration is 1 µg/mL. Please optimize the concentration based on your specific assay requirements. For high-ratio antibody dilutions (≥1:10000) a sequential dilution method is strongly recommended to ensure measurement accuracy.

## Immunogen Information

### Gene ID

93759

### Swiss Prot

Q923E4

### Immunogen

Synthetic peptide. This information is considered to be commercially sensitive.

### Synonyms

Sir2; Sir2a; SIR2L1; Sir2alpha

## Contact

☎ | 400-999-6126

✉ | [cn.market@abclonal.com.cn](mailto:cn.market@abclonal.com.cn)

🌐 | [www.abclonal.com.cn](http://www.abclonal.com.cn)

## Product Information

### Source

Rabbit

### Isotype

IgG

### Purification

Affinity purification

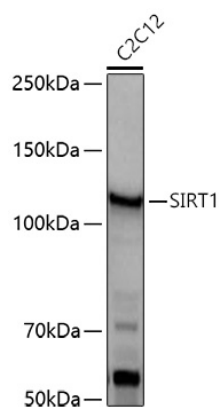
### Storage

Store at -20°C. Avoid freeze / thaw cycles.

Buffer: PBS with 0.09% Sodium azide, 50% glycerol, pH7.3.

## Validation Data

---



Western blot analysis of lysates from C2C12 cells using SIRT1 Rabbit pAb (A28514) at 1:3000 dilution incubated at room temperature for 1.5 hours.

Secondary antibody: HRP-conjugated Goat anti-Rabbit IgG (H+L) (AS014) at 1:10000 dilution.

Lysates/proteins: 25 µg per lane.

Blocking buffer: 3% nonfat dry milk in TBST.

Detection: ECL Basic Kit (RM00020).

Exposure time: 90 s.