

# GSDMD (Full Length+C terminal) Rabbit mAb

Catalog No.: A28509 **Recombinant**

## Basic Information

### Observed MW

22 kDa(C terminal)/53 kDa(Full Length)

### Calculated MW

53 kDa

### Category

Primary antibody

### Applications

WB,IF/ICC,IHC-P,ELISA

### Cross-Reactivity

Mouse

### CloneNo number

ARC78576

## Background

Enables phospholipid binding activity; transcription coactivator activity; and wide pore channel activity. Involved in several processes, including defense response to bacterium; positive regulation of interleukin-1 beta production; and protein-containing complex assembly. Acts upstream of or within ceramide biosynthetic process; plasma membrane repair; and protein maturation. Located in cytosol; extracellular space; and mitochondrial membrane. Part of NLRP3 inflammasome complex. Is active in plasma membrane. Is expressed in several structures, including aorta; gut; liver; metanephros; and spleen. Orthologous to human GSDMD (gasdermin D).

## Recommended Dilutions

**WB** 1:3000 - 1:10000**IF/ICC** 1:100 - 1:200**IHC-P** 1:300 - 1:1200

**ELISA** Recommended starting concentration is 1 µg/mL. Please optimize the concentration based on your specific assay requirements. For high-ratio antibody dilutions (≥1:10000) a sequential dilution method is strongly recommended to ensure measurement accuracy.

## Immunogen Information

### Gene ID

69146

### Swiss Prot

Q9D8T2

### Immunogen

Recombinant protein (or fragment). This information is considered to be commercially sensitive.

### Synonyms

DF5L; M2-4; Dfna5l; GsdmD-1; Gsdmdc1; 1810036L03Rik

## Product Information

### Source

Rabbit

### Isotype

IgG

### Purification

Affinity purification

### Storage

Store at -20°C. Avoid freeze / thaw cycles.

Buffer: PBS with 0.09% Sodium azide, 0.05% BSA, 50% glycerol, pH7.3.

Contact

---

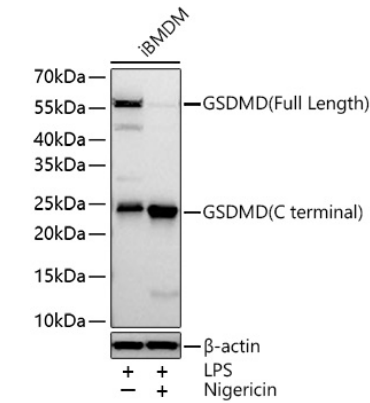
☎ | 400-999-6126

✉ | [cn.market@abclonal.com.cn](mailto:cn.market@abclonal.com.cn)

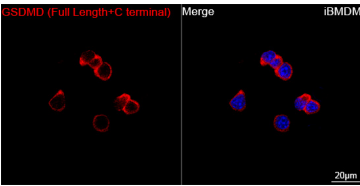
🌐 | [www.abclonal.com.cn](http://www.abclonal.com.cn)

---

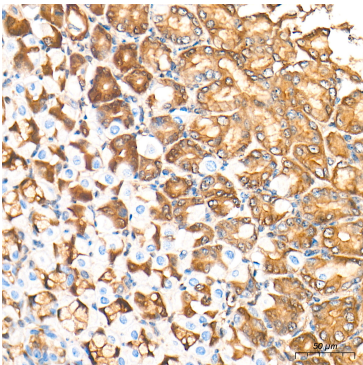
Validation Data



Western blot analysis of various lysates using GSDMD (Full Length+C terminal) Rabbit mAb (A28509) at 1:10000 dilution incubated overnight at 4°C. iBMDM cells were treated with LPS (100 ng/mL) at 37°C for 5 hours, iBMDM cells were treated with LPS (100 ng/mL) at 37°C for 4 hours and Nigericin (20 μM) at 37°C for 30 minutes.  
Secondary antibody: HRP-conjugated Goat anti-Rabbit IgG (H+L) (AS014) at 1:10000 dilution.  
Lysates/proteins: 30 μg per lane.  
Blocking buffer: 3% nonfat dry milk in TBST.  
Detection: ECL Basic Kit (RM00020).  
Exposure time: 20 s.



Confocal imaging of iBMDM cells using GSDMD (Full Length+C terminal) Rabbit mAb (A28509, dilution 1:200) followed by a further incubation with Cy3-conjugated Goat anti-Rabbit IgG (H+L) (AS007, dilution 1:500) (Red). DAPI was used for nuclear staining (Blue). Objective: 100x.



Immunohistochemistry analysis of paraffin-embedded Mouse stomach tissue using GSDMD (Full Length+C terminal) Rabbit mAb (A28509) at a dilution of 1:500 (40x lens). High pressure antigen retrieval performed with 0.01M Tris-EDTA Buffer (pH 9.0) prior to IHC staining.