

# THBS1 Rabbit mAb

Catalog No.: A28497 **Recombinant**

## Basic Information

### Observed MW

170 kDa

### Calculated MW

129 kDa/120 kDa

### Category

Primary antibody

### Applications

WB, IP, IHC-P, ELISA

### Cross-Reactivity

Human, Mouse, Rat

### CloneNo number

ARC79889

## Background

The protein encoded by this gene is a subunit of a disulfide-linked homotrimeric protein. This protein is an adhesive glycoprotein that mediates cell-to-cell and cell-to-matrix interactions. This protein can bind to fibrinogen, fibronectin, laminin, type V collagen and integrins alpha-V/beta-1. This protein has been shown to play roles in platelet aggregation, angiogenesis, and tumorigenesis.

## Recommended Dilutions

**WB** 1:2000 - 1:5000

**IP** 0.5µg - 4µg antibody for  
200µg - 400µg extracts  
of whole cells

**IHC-P** 1:200 - 1:800

**ELISA** Recommended starting  
concentration is 1 µg/mL.  
Please optimize the  
concentration based on  
your specific assay  
requirements. For high-  
ratio antibody dilutions  
(≥1:10000) a sequential  
dilution method is  
strongly recommended  
to ensure measurement  
accuracy.

## Immunogen Information

### Gene ID

7057

### Swiss Prot

P07996

### Immunogen

Synthetic peptide. This information is considered to be commercially sensitive.

### Synonyms

TSP; THBS; TSP1; TSP-1; THBS-1

## Product Information

### Source

Rabbit

### Isotype

IgG

### Purification

Affinity purification

### Storage

Store at -20°C. Avoid freeze / thaw cycles.

Buffer: PBS containing 50% glycerol, preserved with proclin300 or sodium azide (as specified on the Certificate of Analysis), pH 7.3.

Contact

---

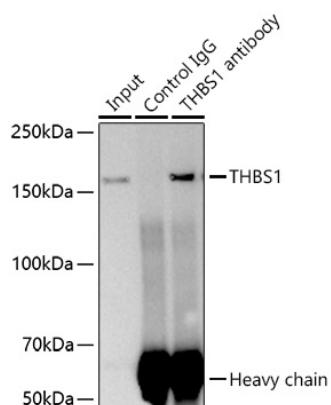
☎ | 400-999-6126

✉ | [cn.market@abclonal.com.cn](mailto:cn.market@abclonal.com.cn)

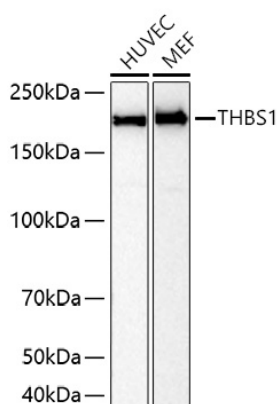
🌐 | [www.abclonal.com.cn](http://www.abclonal.com.cn)

---

## Validation Data



Immunoprecipitation of THBS1 from 300 µg extracts of HUVEC cells was performed using 2 µg of THBS1 Rabbit mAb (A28497). Rabbit Control IgG (AC005) was used to precipitate the Control IgG sample. IP samples were eluted with 1x Laemmli Buffer. The Input lane represents 10% of the total input. Western blot analysis of immunoprecipitates was conducted using THBS1 Rabbit mAb (A28497) at a dilution of 1:5000.



Western blot analysis of various lysates using THBS1 Rabbit mAb (A28497) at 1:5000 dilution incubated overnight at 4°C.

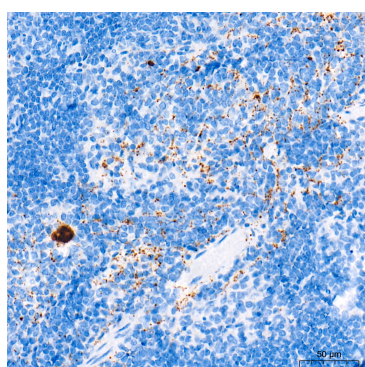
Secondary antibody: HRP-conjugated Goat anti-Rabbit IgG (H+L) (AS014) at 1:10000 dilution.

Lysates/proteins: 25 µg per lane.

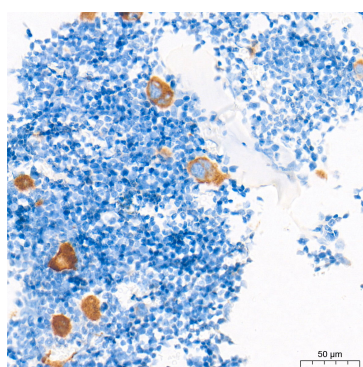
Blocking buffer: 3% nonfat dry milk in TBST.

Detection: ECL Basic Kit (RM00020).

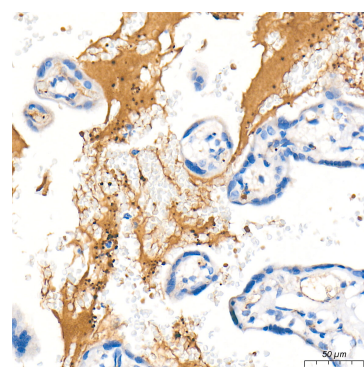
Exposure time: 45 s.



Immunohistochemistry analysis of paraffin-embedded Mouse spleen tissue using THBS1 Rabbit mAb (A28497) at a dilution of 1:500 (40x lens). High pressure antigen retrieval performed with 0.01M Tris-EDTA Buffer (pH 9.0) prior to IHC staining.



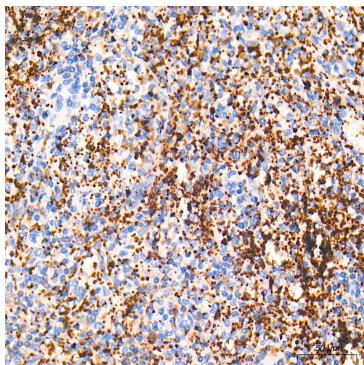
Immunohistochemistry analysis of paraffin-embedded Mouse bone marrow tissue using THBS1 Rabbit mAb (A28497) at a dilution of 1:500 (40x lens). High pressure antigen retrieval performed with 0.01M Tris-EDTA Buffer (pH 9.0) prior to IHC staining.



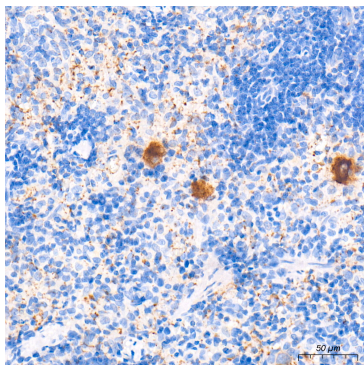
Immunohistochemistry analysis of paraffin-embedded Human placenta tissue using THBS1 Rabbit mAb (A28497) at a dilution of 1:500 (40x lens). High pressure antigen retrieval performed with 0.01M Tris-EDTA Buffer (pH 9.0) prior to IHC staining.

## Validation Data

---



Immunohistochemistry analysis of paraffin-embedded Human spleen tissue using THBS1 Rabbit mAb (A28497) at a dilution of 1:500 (40x lens). High pressure antigen retrieval performed with 0.01M Tris-EDTA Buffer (pH 9.0) prior to IHC staining.



Immunohistochemistry analysis of paraffin-embedded Rat spleen tissue using THBS1 Rabbit mAb (A28497) at a dilution of 1:500 (40x lens). High pressure antigen retrieval performed with 0.01M Tris-EDTA Buffer (pH 9.0) prior to IHC staining.